



# Nantucket Pavers, Inc.

[www.nantucketpavers.com](http://www.nantucketpavers.com)

*Product*  
**CATALOG**



Creating a bit of competition for Mother Nature™

*Patios & Walkways*

**RIVENSTONE**

With the Nantucket Pavers' Rivenstone line, quality and beauty need not be sacrificed for the sake of affordability. An alternative to natural stone, Rivenstone inspires with a beautifully finished texture and 3 unique color blends. Rivenstone patio blocks are all uniform in thickness (1 ½") and have clean, sharp edges. Rivenstone makes having your dream outdoor hardscape possible on a realistic budget.

Sizes: 9"x18", 12"x12", 12"x18", 12"x24", 18"x18", 18"x24", 18"x30", 18"x36", 24"x24" and 24"x36"



**AFFORDABLE ALTERNATIVE TO  
NATURAL STONE**



*Blue*  
**RIVENSTONE**



*Rivenstone Patio - Blue*



*Rivenstone Patio - Blue Variegated*



*Rivenstone Walkway - Blue Variegated*

## PATIO-ON-A-PALLET KITS

Rivenstone Patio-On-A-Pallet Kits take the “hard” out of “hardscape” and makes it easy to have the patio you’ve always wanted. With many patterns to choose from, no cuts necessary, and all blocks packaged on a single pallet, laying out a brilliant looking patio has never been more of a straightforward cinch.

Rivenstone Patio-On-A-Pallet Kits are available in a variety of sizes: 10'x10', 10.5'x10.5' and 12'x12'

See Rivenstone product page for color samples: Blue, Blue Variegated and Tan Variegated.

Also see back page for available pattern designs: Basketweave, Dutch, Random, Kingsmill, Circle and Stone Design.

---

AFFORDABLE ALTERNATIVE TO  
NATURAL STONE

---

*Rivenstone Walkway - Blue*

### KINGSMILL PATTERN



*Random Pattern - Blue Variegated*



*Kingsmill Pattern - Blue*



*Random Pattern - Blue*

Photo provided by Drywall Masonry Supply

*Patios & Walkways*

# BERKSHIRE STONE & STONE DESIGN

Berkshire is an irregular shaped block (13" x 19") that can be used to create an elegant walkway or a unique and complex looking patio. Berkshire Stone is available in Blue, Blue Variegated and Tan Variegated colors.

Stone Design's intricate pattern replicates the look of small irregular flagging without all the work. Stone Design is an 18"x18" block that can be arranged in numerous patio designs just by turning it!

Stone Design is available in Blue Variegated only.



*Berkshire Stone  
Blue*



*Berkshire Stone  
Blue Variegated*



*Berkshire Stone  
Tan Variegated*



*Stone Design  
\*Blue Variegated only*

AFFORDABLE ALTERNATIVE TO  
NATURAL STONE



*Patio*

## BERKSHIRE STONE TAN VARIEGATED



*Berkshire Stone Patio Tan Variegated*



*Stone Design Patio*



*Berkshire Stone Patio Blue Variegated*

## Steppers

# STEPPERS, TREADS & STEPPING STONES

Quarrystone manufactured Landscape Steppers are almost indistinguishable from the real thing! At 6" high, they add beauty and depth to any yard or sloped walkway.

Sizes available are: 16"x36"x6",  
16"x48"x6" and 16"x60"x6".

Our Stair Treads are manufactured and with its appealing bluestone finish they look just like natural bluestone. You can use the treads to reface old steps, or even to cap a wall for a unique setting. They are only available in Blue.

Sizes available are: 12"x48"x2",  
12"x60"x2" and 12"x72"x2".

Mix and match our Stepping Stones to create a beautiful flagstone walkway or just use them to add a charming New England path to your property! Available colors are Blue, Blue Variegated and Tan Variegated. Available sizes are: 20"x17" and 21"x13".

AFFORDABLE ALTERNATIVE TO  
NATURAL STONE



Quarrystone  
**STEPPERS**

Stepper Colors



Stepping Stone - Tan Variegated



Stepping Stone - Blue



Wall Caps, Stair Treads & CT Fieldstone

## Finishing Touches

# WALLS, CAPS & PIERS

Our wall blocks come in CT Fieldstone and Meadow Wall designs. Both are magnificently finished on 3 sides, making it painless to create beautiful corners. The natural look and versatility makes it an easy choice for building garden edgers, freestanding walls, and piers.

We also offer wall and pier caps that truly bring out the beautiful characteristics of the Meadow Wall and CT Fieldstone walls. Add a touch of elegance to your property with our line of natural looking Quarrystone Pier Caps that come in Flat, Peak and Light Cap designs.

### Dimensions

CT Fieldston Wall: 17.5" L x 4" W x 4.5" H

Meadow Wall: 17.5" L x 4" W x 5.5" H



AFFORDABLE ALTERNATIVE TO  
NATURAL STONE



Meadow Wall - Tan Variegated  
24" Pier Caps - Gray  
Stair Tread - Blue



26" Quarrystone Light Cap - Gray



CT Fieldstone Wall - Blue Variegated



CT Fieldstone - Blue Variegated



CT Fieldstone - Blue Variegated. Wall Caps - Gray



Meadow Wall - Tan Variegated



*Ledgestone Firepit  
-an easy install*



*Set the ring and  
lay the blocks*



*3 Layers  
16 total blocks*



*Blocks interlock*



*Set the 4 caps*



*3 bags of base  
sand to finish*



*Ledgestone Firepit - Brown*



*Blue*



*Blue Variegated*



*Brown*



*Tan Variegated*



*Oxford Firepit - Charcoal*

## *Backyard Accessories*

### **FIRE PITS**

Nothing adds a warmer more welcoming atmosphere to your backyard quite like a firepit. Available in 2 different styles and an array of colors.

The Oxford and Ledgestone firepits come palletized with everything needed for a quick and simple installation. Included on the pallet are all blocks, steel ring, 3 bags of sand and easy to follow instructions.

Additional layers for the Ledgestone Firepits are also available to increase the height of your firepit, create a wishing well or a circular tree ring flower garden.

#### Oxford Firepit Dimensions

Inside Diameter: 31"  
Outside Diameter: 47"  
Height: 16"

#### Ledgestone Firepit Dimensions

Inside Diameter: 33"  
Outside Diameter: 47 1/4"  
Height: 14"

**AFFORDABLE ALTERNATIVE TO  
NATURAL STONE**



*Wishing Well Ledgestone - Tan Variegated*

*Specialty Blocks*

**MEDALLIONS, ROUNDS & SPECIALTY BLOCKS**

Whether it's honoring a service man or woman with an Armed Forces medallion for your garden or a simple but sturdy splash block that won't blow away in the wind, our specialty blocks and medallions can make any garden or yard positively special!

AFFORDABLE ALTERNATIVE TO NATURAL STONE



*Scallop Shell*  
19" x 2" deep



*Sand Dollar*  
17" x 2" deep



*Splash Block*  
26" x 3" deep  
12" x 8" taper



*Parking Lot Stop*  
4.5" x 9.25" x 5'

16" Round

**STEPPING STONES**



*Blue*



*Blue Variegated*



*Tan Variegated*

Armed Forces

**MEDALLIONS**

17 1/2" Diameter



*Navy*



*Marine Corps*



*Air Force*



*Army*



*Coast Guard*





*Natural Pavers & Edgers*

# GRANITE COBBLESTONES

Natural Granite Cobblestone blocks are rated for vehicular traffic and are one of the oldest building materials known to man.

Resistant to scratching and durable, Cobblestones are ideal for driveways and foot traffic areas but can also create authentic old world Cobblestone walkways and edgers.

Natural Granite Cobblestone blocks are cut by hand and due to the cutting process the dimensions may vary slightly.

*Jumbo*



*10" x 7" x 4"*

*Landscape*



*8" x 4" x 4"*

*Natural*  
**COBBLESTONE**

**AFFORDABLE  
NATURAL STONE**



*Garden Edger*



*Driveway Border*



*Driveway Edger*

## COBBLESTONE PATIO BLOCK DESIGNS & PATTERNS

Our Cobblestone Patio Blocks are an excellent alternative to traditional cobbles while achieving the same stylish look. Also, unlike natural cobblestones, these patio blocks create a uniform patio surface. They are easier to walk on, and provide a more stable platform for patio furniture.

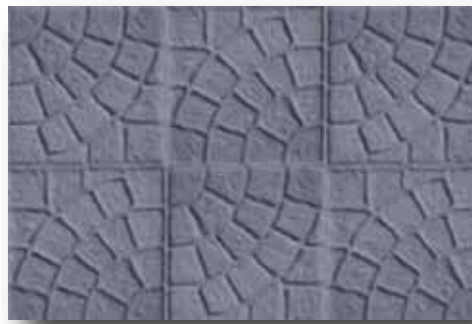
With our Cobblestone Patio Blocks, you can create an assortment of beautiful designs to personalize your outdoor area. It's so easy to customize your patio by creating swirls, circles and waves with a combination of our square and corner pieces. Utilize our Cobblestone Planter block to create an 18" circular flower bed within your patio or as a stand alone feature.

Cobblestone Patio Blocks are only available in 18" x 18" size and only in a Blue color.

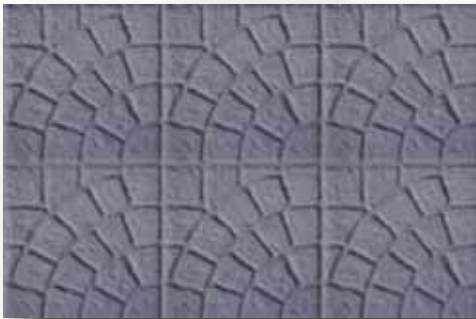
AFFORDABLE ALTERNATIVE TO  
NATURAL STONE



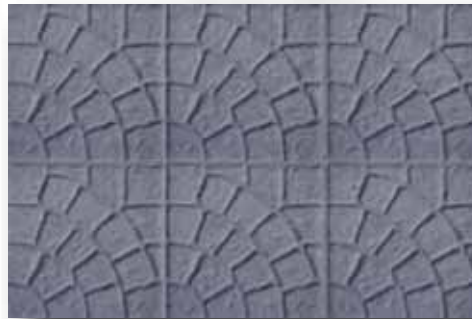
Curves (Left)



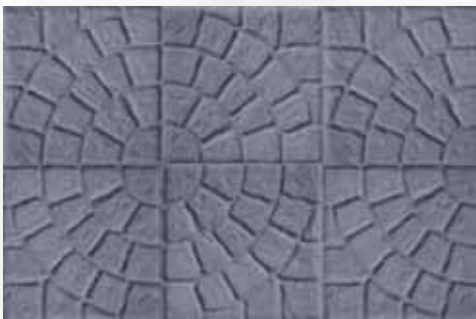
Curves (Right)



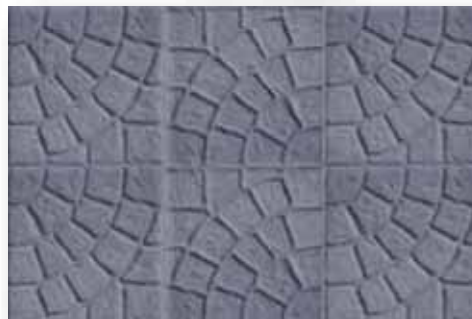
Fans (Left)



Fans (Right)



Circles



Curves/Fans



Waves



Square

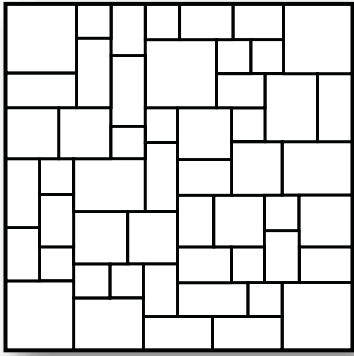


Corner



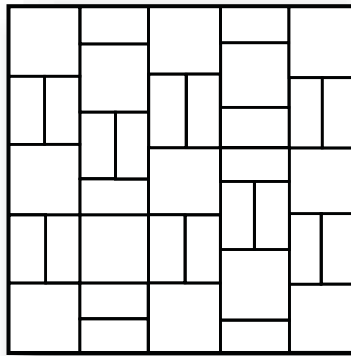
Planter

**10' x 10' Random (100 sq Ft)**



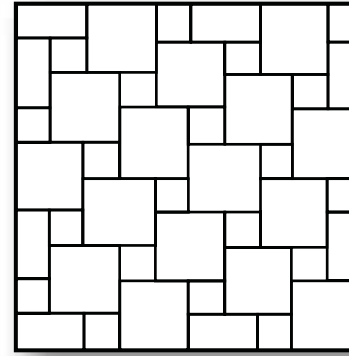
(5)-24" x 24" (14)-12" x 12"  
(9)-12" x 24" (12)-12" x 18"  
(8)-18" x 18" (4)-18" x 24"

**10' x 10' Basketweave (100 sq Ft)**



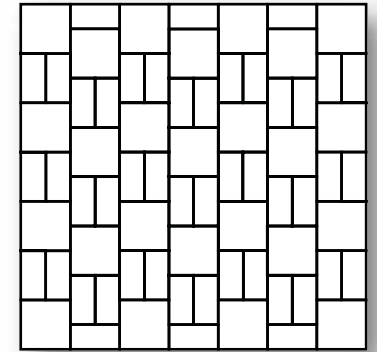
(24)-12" x 24"  
(13)-24" x 24"

**10' x 10' Dutch (100 sq Ft)**



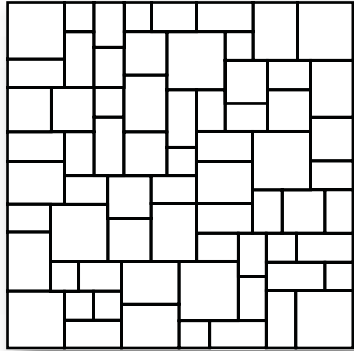
(16)-24" x 24"  
(8)-12" x 24"  
(20) 12" x 12"

**10.5' x 10.5' Kingsmill (110 sq Ft)**



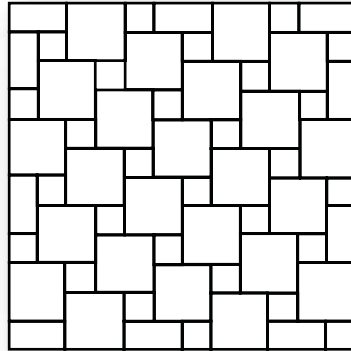
(28)-9" x 18" (25)-18" x 18"

**12' x 12' Random (144 sq Ft)**



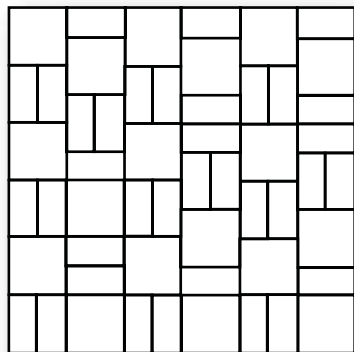
(8)-24" x 24" (13)-12" x 24"  
(9)-18" x 24" (17)-12" x 18"  
(10)-18" x 18" (11)-12" x 12"

**12' x 12' Dutch (144 sq Ft)**



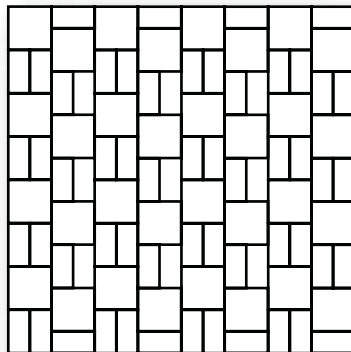
(24)-24" x 24"  
(10)-12" x 24"  
(28)-12" x 12"

**12' x 12' Basketweave (144 sq Ft)**



(18)-24" x 24"  
(36)-12" x 24"

**12' x 12' Kingsmill (144 sq Ft)**

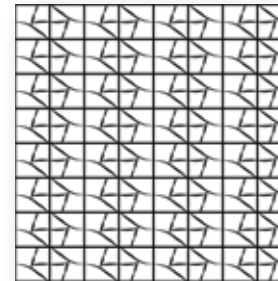


(64)-9" x 18" (32)-18" x 18"

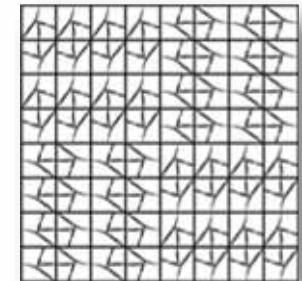
*Information*  
**DIAGRAMS & INSTRUCTIONS**

**Stone Design Patterns**

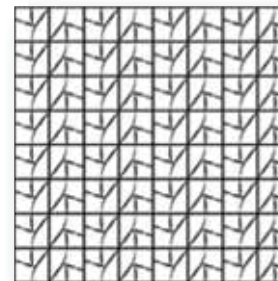
*Wave*



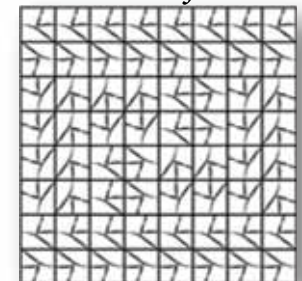
*Reflection*



*Braided*



*Braided Reflection*



**11.5' x 11.5' Patio (132 Sq Ft)**  
64 pcs of Stone Design

## WARRANTY

Nantucket Pavers products undergo rigorous testing procedures to ensure we meet the requirements of ASTM C1194 and ASTM C1195 . This warranty is offered to the original Consumer Purchaser (Homeowner), for as long as they own their home. Nantucket Pavers warrants that the product is free from defects in material and workmanship. This Warranty is only valid if the material is installed using our suggested installation guidelines. This warranty is for residential, non-vehicular uses and does not imply a warranty for commercial applications. Nantucket Pavers warranty is limited to supplying new material only at no charge. Nantucket Pavers will not be responsible for freight or any replacement labor. Any warranty claim must be accompanied with original proof of purchase. Color matching cannot be guaranteed.

## GENERAL PRODUCT INFORMATION

### COLOR

The colors shown in our brochure are as accurate as printing and photographic processes allow. It is essential for the customer to select products they want by inspecting each item for their approval in color during the daylight.

### EFFLORESCENCE

Every concrete product that contains a high cement content can suffer from Efflorescence. This is a natural phenomenon which is beyond our control. The product may form patches of white, which gives the impression that the color is fading, however, with time the patches will disappear as natural weathering takes place. Conditions where condensation or rising ground water can permeate the concrete over an extended period, followed by slow drying, will promote the formation of efflorescence. The efflorescence will be eroded by rain, which is slightly acidic. As nature causes the problem, nature sometimes holds the cure. Efflorescence does not affect the durability and performance of concrete in question. Nantucket Pavers can not be held responsible for this natural phenomenon.

### REMOVAL OF EFFLORESCENCE

Efflorescence can be removed mechanically by dry brushing or washing with chemical masonry cleaner. Nantucket Pavers recommends Behr Premium Concrete & Masonry Degreaser & Cleaner product as a chemical masonry cleaner. Follow the instructions that come with the bottle. Before attempting to remove efflorescence by these techniques, it is recommended that trials should be carried out on samples, or a limited area, in order to assess the effect on the appearance.

### DE-ICING SALT

De-icing Salt is not recommended for use on this product. The use of salt can affect both the durability and the looks of the paving during continual freezing and thawing. Nantucket Pavers is not responsible for any product damage resulting from the use of De-Icing Salt.

### DEFECTIVE PRODUCT

Should a product reach you in an unsatisfactory condition, and other than a naturally occurring one as described above, the defect should have to be apparent prior to laying. It is at this point that the supplier should be notified of such a fault, allowing time for the rejected product to be replaced. If the complaint is raised after laying the product, no responsibility will be accepted for any delays, relaying or removing costs.

### INSTALLATION

Nantucket Pavers recommends using a traditional "sand set" installation method for all of Nantucket Pavers products. With this method you have greater control over your base and easier placement of blocks that may become damaged over time. Nantucket Pavers DOES NOT recommend using Stone Dust/Quarry Dust base as an installation method. Stone Dust/Quarry Dust does not allow adequate drainage of water and has also caused damage to the product due to a substance in the dust. Nantucket Pavers is not responsible for any product that has been installed with Stone Dust/Quarry Dust.

## INSTALLATION OPTIONS

### **SAND SET**

1½" Rivenstone Block

1" Coarse bedding

4" - 6" Processed gravel or other free-draining material (compacted)

Compacted soil

### **MORTARED**

1½" Rivenstone Block

1" Mortar bed

4" Reinforced concrete pad

Compacted soil or other suitable base

*In tests conducted by an independent laboratory in accordance with ASTM standards, our products have consistently exceeded the performance measures shown below:*

*ASTM C1194 Compressive Strength of Architectural Cast Stone: 6000 psi*

*ASTM C1195 Absorption of Architectural Cast Stone: Less than 5% absorption*