



# Keystone Product Catalog

Walls • Patio Stones • Pavers • Edgers • Outdoor Living





Stonegate®



For over 30 years, Keystone Retaining Wall Systems has set the worldwide standard in soil retention, erosion control and innovative landscape solutions. By working with the finest network of manufacturers, product developers, engineers and sales professionals in the business, Keystone ensures that its products and services offer the best site solutions for commercial, residential, DOT, industrial and municipal applications. Offering a broad portfolio of products, Keystone has the right solution for projects of all scale, from your dream backyard to the most challenging structural site.

## Outdoor Living

Fireplaces & Fire Pits .....	4
Kitchens, Benches, Columns & More .....	6

## Landscape Walls

Insignia® .....	8
Capestone .....	10
Legacy Stone® .....	12
Verazzo Stone® .....	14
Keystone Country Manor® .....	16
Stonegate® .....	18

## Structural Walls

Keystone Compac® .....	20
Keystone Standard® .....	22

## Patio Stones & Pavers

Alameda® .....	24
Campton® .....	25

## Edgers

Alameda® .....	26
Grand Prize™ .....	26
Insignia® .....	27

Stonegate® No-Cut Designs .....	28
---------------------------------	----







# Gather around the fire.









Make it extraordinary.



Stonegate®



Keystone Compac®



Keystone Country Manor®



Verazzo Stone®



Stonegate®

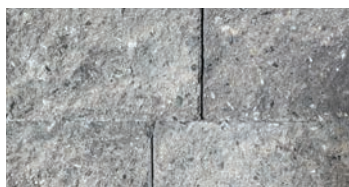




KEYSTONE  
**INSIGNIA**<sup>®</sup>  
WALL



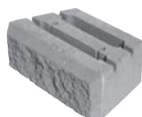
A graceful blend of rustic and modern aesthetics creates an attractive contemporary look.



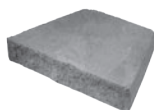
Granite Blend



Tan/Charcoal



Wall Unit



Cap Unit



2 Connection pins  
required per unit



Fire Pit Ring

Product	Height	Width	Depth	Weight	Units/Pallet	Face Ft./Pallet
Wall Unit	4"	12"	7"	18 lbs	112	37
Product	Height	Width	Depth	Weight	Units/Pallet	Linear Ft./Pallet
Cap Unit	2½"	12"/8"	7"	14 lbs	200	200
Product	Dimension			Included		
Fire Pit Kit	18½" High, Inside Diameter - 31" Outside Diameter - 45½"			48 Insignia units, 12 Insignia cap units, 29" fire ring, 2" flange		

Colors printed here are as true a match as the printing process will allow. For best matching results, please refer to actual samples.





# Capestone



Rugged textures combine with a smooth face to deliver a contemporary look.



Granite Blend



Tan/Charcoal



Wall Unit



Fire Wedge



Fire Pit Ring

Product	Height	Width	Depth	Weight	Units/Pallet	Sq. Ft./Pallet
Wall Unit	4"	12"	8"	30 lbs	126	42
Fire Wedge	4"	8" / 5.375"	8"	17 lbs	72	16

Product	Dimension	Included
Round Fire Pit Kit	16" High, Inside Diameter - 30 $\frac{1}{8}$ " Outside Diameter - 46 $\frac{1}{4}$ "	72 Fire Wedge units (4 courses, 18 units per course), 29" fire ring, 2" flange

Colors printed here are as true a match as the printing process will allow. For best matching results, please refer to actual samples.

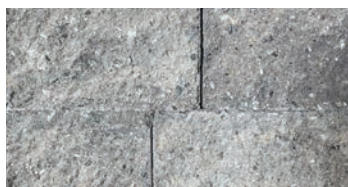




KEYSTONE  
**Legacy Stone®**



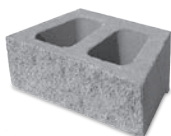
The appearance of hand-chiseled quarried stone beautifully enhances any landscape.



Granite Blend



Sierra Blend



Wall Unit



6" Corner



Cap Unit

Product	Height	Width	Depth	Weight	Units/Pallet	Face Ft./Pallet
Wall Unit	6"	16"	10"	42 lbs	48	32
6" Corner	6"	16"	8"	63 lbs	90	60

Product	Height	Width	Depth	Weight	Units/Pallet	Linear Ft./Pallet
Cap Unit	3"	16"/12"	11½"	37 lbs	72	83

Colors printed here are as true a match as the printing process will allow. For best matching results, please refer to actual samples.



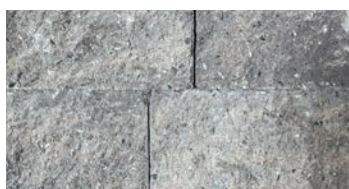


New 3pc  
Option!

KEYSTONE  
*Verazzo Stone*®



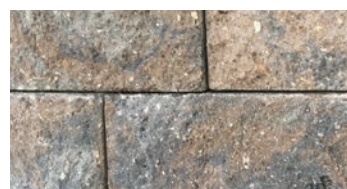
Handsome and rugged good looks combine with impressive strength and design flexibility.



Granite Blend



Sierra Blend



Sandy Gray  
**Limited Availability**



Small

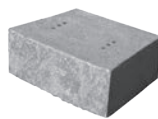


Medium

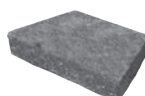


Large

3-pc System



Single Unit



Cap Unit



6" Corner



2 Connection pins  
required per unit.

	Product	Height	Width	Depth	Weight	Units/Pallet	Face Ft./Pallet
Bundled	Small	6"	6"/4"	10½"	27 lbs	27	36
	Medium	6"	10"/8"	10½"	35 lbs	27	
	Large	6"	16"/12"	10½"	68 lbs	27	
	Large (single)	6"	16"/12"	10½"	68 lbs	54	36
	6" Corner	6"	16"	8"	63 lbs	90	60
	Product	Height	Width	Depth	Weight	Units/Pallet	Linear Ft./Pallet
	Cap Unit	3"	16"/12"	11½"	37 lbs	72	83

Colors printed here are as true a match as the printing process will allow. For best matching results, please refer to actual samples.





KEYSTONE®  
*Country Manor*®



Old World charm meets unmatched modern-day design versatility and durability.



See page 30  
for outdoor  
living designs!



Granite Blend



Tan/Charcoal / Cape Blend



Large



Medium



Small



Cap Unit



2 Connection pins  
required per unit.

	Product	Height	Width	Depth	Weight	Units/Pallet	Face Ft./Pallet
Bundled	Small	6"	6"/4"	10"	22 lbs	24	32
	Medium	6"	12"/10"	10"	49 lbs	24	
	Large	6"	16"/14"	10"	62 lbs	24	
	Product	Height	Width	Depth	Weight	Units/Pallet	Linear Ft./Pallet
	Cap Unit	3"	12"/10"	11"	30 lbs	96	87

Colors printed here are as true a match as the printing process will allow. For best matching results, please refer to actual samples.





Stonegate®



Combining an elegant weathered stone appearance with almost endless design possibilities.



Granite Blend



Tan/Charcoal / Cape Blend



See page 30  
for outdoor  
living designs!



Small



Medium



Large



Cap



2 Connection pins  
required per unit.

	Product	Height	Width	Depth	Weight	Units/Pallet	Face Ft./Pallet
Bundled	Small	6"	6"/4"	10"	22 lbs	24	32
	Medium	6"	12"/10"	10"	49 lbs	24	
	Large	6"	16"/14"	10"	62 lbs	24	
	Product	Height	Width	Depth	Weight	Units/Pallet	Linear Ft./Pallet
	Cap	3"	12"/10"	11"	30 lbs	96	87

Colors printed here are as true a match as the printing process will allow. For best matching results, please refer to actual samples.





KEYSTONE  
**COMPAC**<sup>®</sup>



Preferred for its unrivaled aesthetic options, cost-saving versatility and proven wall performance.



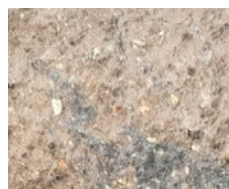
Charcoal



Granite Blend



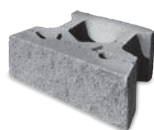
Natural



Sandy Grey  
**Limited Availability**



Sierra Blend



Straight Split



Straight Cap



Corner



2 Connection pins  
required per unit.

Product	Height	Width	Depth	Weight	Units/Pallet	Face Ft./Pallet
Straight Split	8"	18"	12"	75 lbs	45	45
Corner Unit	8"	18"	9"	105 lbs	40	40

Product	Height	Width	Depth	Weight	Units/Pallet	Linear Ft./Pallet
Straight Cap	4"	18"	10½"	52 lbs	80	120

Colors printed here are as true a match as the printing process will allow. For best matching results, please refer to actual samples.

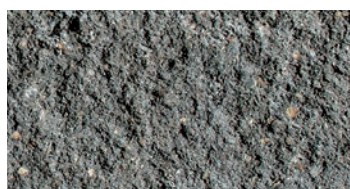




KEYSTONE  
**STANDARD**®



Unit's depth provides an engineered retaining wall solution with unrivaled structural stability.

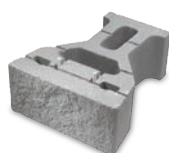


Charcoal



Natural

**Special Order Only**  
Minimum Quantities Apply



Straight Split



Straight Cap



8" Corner



2 Connection pins  
required per unit.

Product	Height	Width	Depth	Weight	Units/Pallet	Face Ft./Pallet
Straight Split	8"	18"	21½"	119 lbs	30	30
8" Corner	8"	18"	9"	105 lbs	40	40

Product	Height	Width	Depth	Weight	Units/Pallet	Linear Ft./Pallet
Straight Cap	4"	18"	10½"	52 lbs	80	120

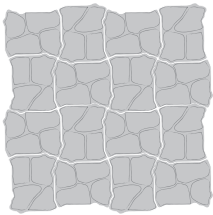
Colors printed here are as true a match as the printing process will allow. For best matching results, please refer to actual samples.



Naturally-weathered river stone beauty, contained in a single unit, simplifies the creation of stunning spaces.



*Alameda*  
PATIO STONE



Layout Pattern



Sierra Blend



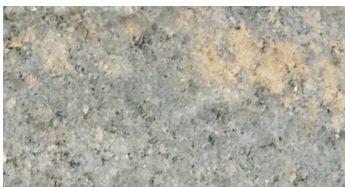
One unit size - two unique faces.

Product	Height	Width	Length	Weight	Units/Pallet	Sq. Ft./Pallet
Each Unit	2 3/8"	11"	13"	26 lbs	100	99

Colors printed here are as true a match as the printing process will allow. For best matching results, please refer to actual samples.



Versatile plank paver makes a dramatic impact via laying patterns and color banding options.



Sandy Gray

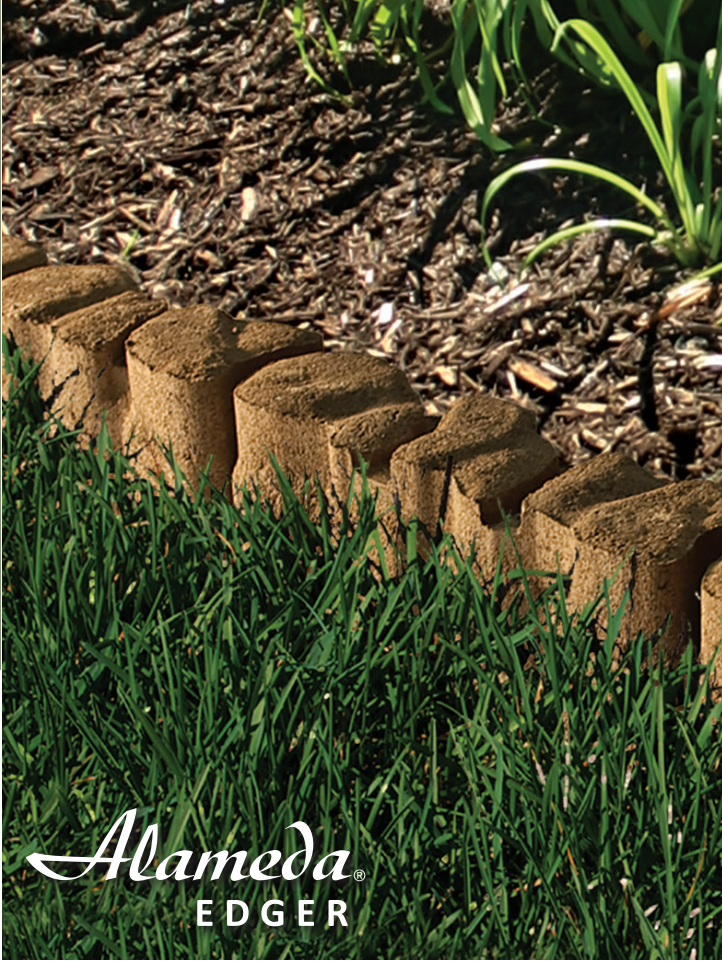


Product	Height	Width	Length	Weight	Units/Pallet	Sq. Ft./Pallet
Each Unit	2⅜"	6"	18"	20 lbs	160	120

Colors printed here are as true a match as the printing process will allow. For best matching results, please refer to actual samples.



Easy to install, these edgers are perfect for garden & lawn edging, borders & tree rings.



Sierra Blend



Red



Alameda Edger  
One unit size - four unique faces.



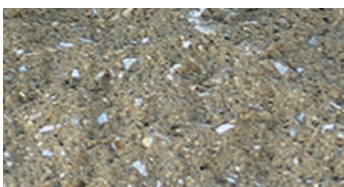
Grand Prize Edger

Product	Height	Width	Length	Weight	Units/Pallet	Linear Ft./Pallet
Alameda	3.6"	3.6"	12"	10.5 lbs	252	252
Grand Prize	3.125"	3.125"	12"	8 lbs	360	360

Colors printed here are as true a match as the printing process will allow. For best matching results, please refer to actual samples.



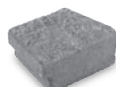
Rugged textures combine with linear elements to deliver a contemporary look.



Tan/Charcoal



Unit A



Unit B

	Product	Height	Width	Depth	Weight	Units/Pallet	Linear Ft./Pallet
Bundled	Unit A	3"	7½" / 6¼"	5"	9 lbs	160	105
	Unit B	3"	8¾" / 7"	5"	9 lbs	160	105

Colors printed here are as true a match as the printing process will allow. For best matching results, please refer to actual samples.





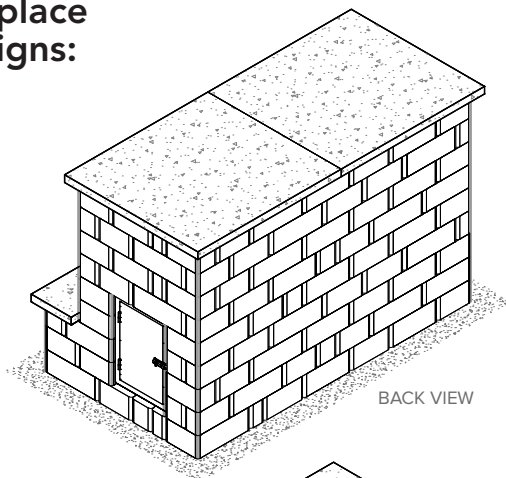
Every day homeowners are choosing Stonegate No-Cut Designs\* to turn their outdoor living dreams into realities.

No-Cut Designs • Full Pallet • Less Labor • Easy Installation



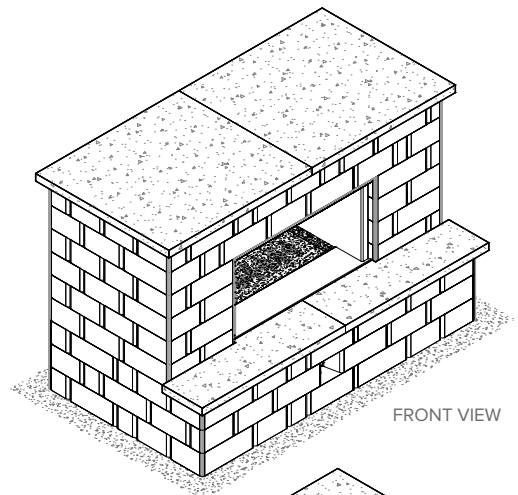
Download step-by-step installation instructions from [www.keystonewalls.com](http://www.keystonewalls.com).

## Fireplace Designs:

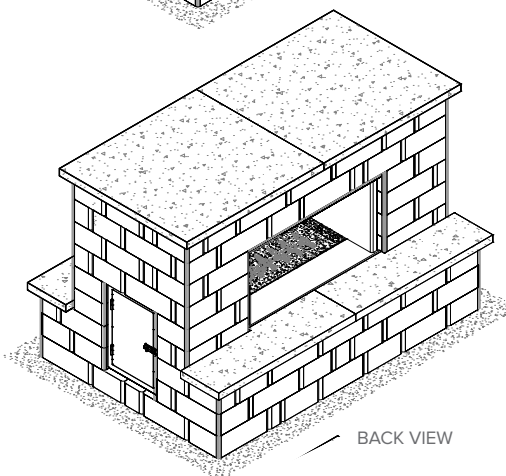


BACK VIEW

1 - Sided

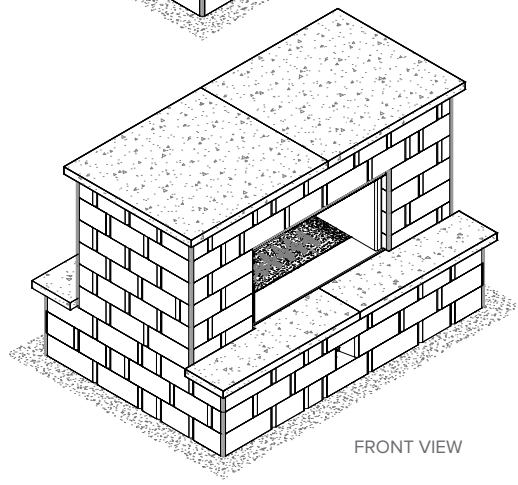


FRONT VIEW



BACK VIEW

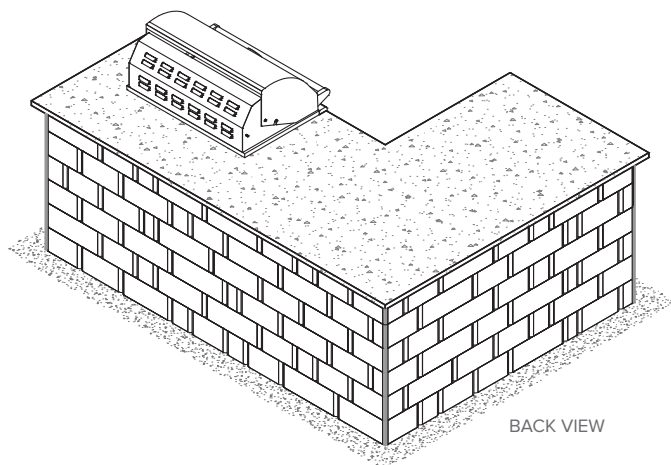
2 - Sided



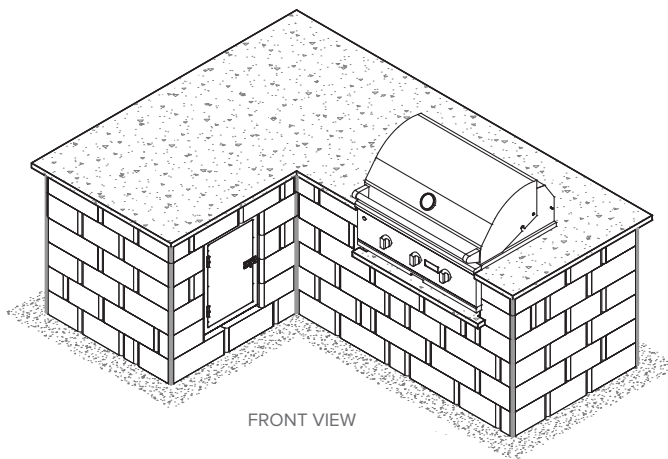
FRONT VIEW



## L-Shaped Grill Station: *Without Seating*



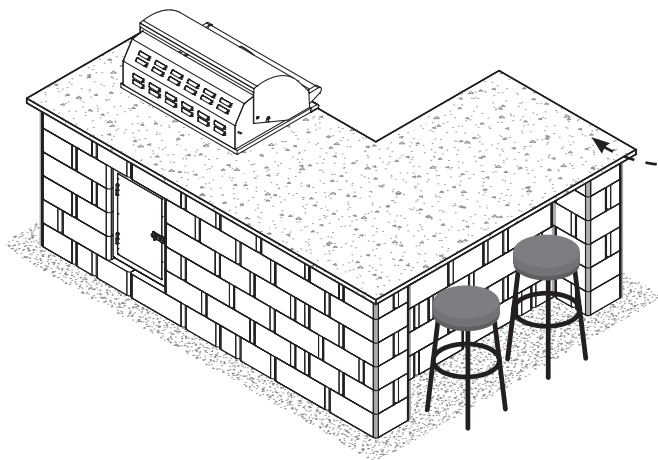
BACK VIEW



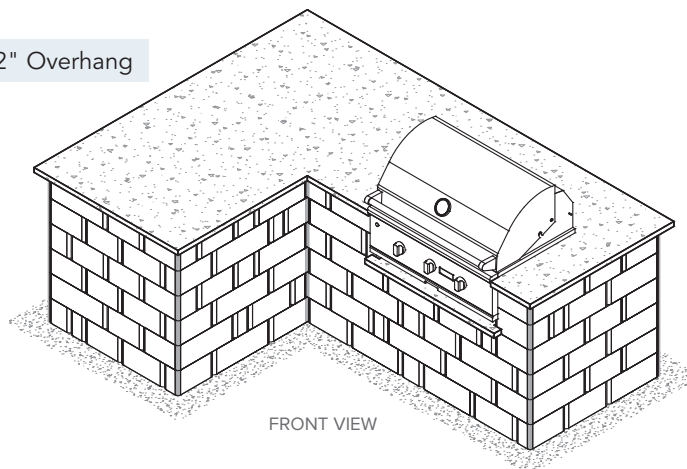
FRONT VIEW



## L-Shaped Grill Station: *With Seating*

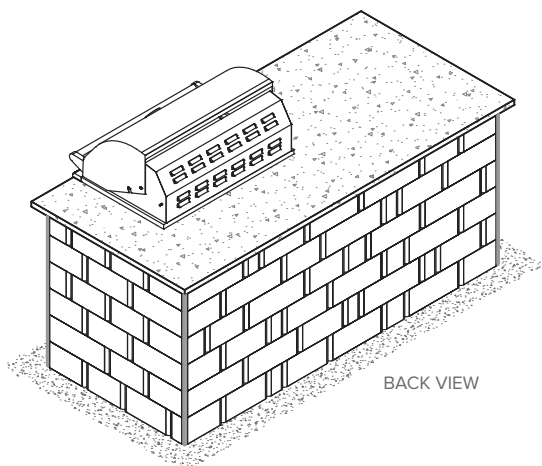


BACK VIEW

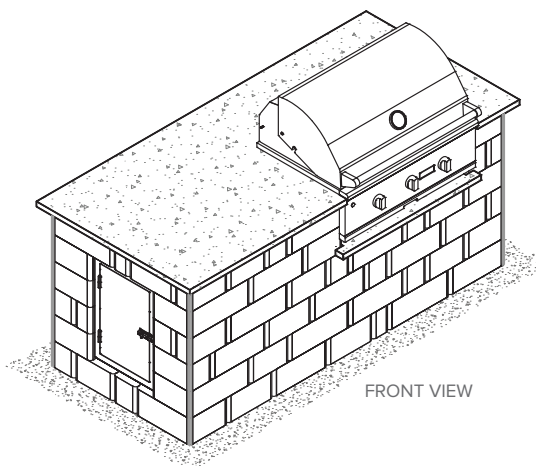


FRONT VIEW

## Straight Grill Station



BACK VIEW



FRONT VIEW



.....

.....

.....

.....

.....

.....

.....

.....

.....

.....

.....

.....

.....

.....

.....

.....

.....

.....

.....

.....



.....

.....

.....

.....

.....

.....

.....

.....

.....

.....

.....

.....

.....

.....

.....

.....

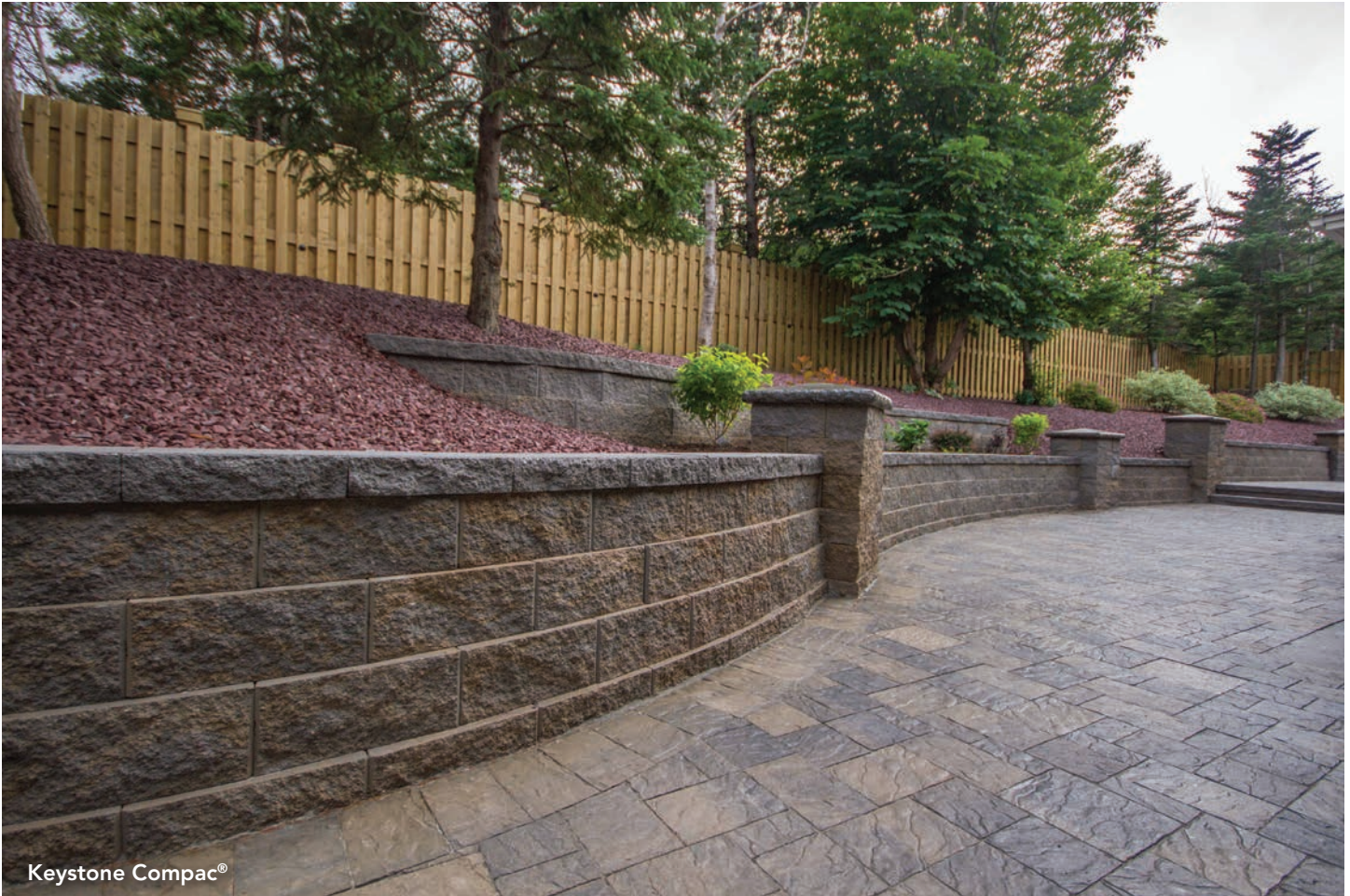
.....

.....

.....

.....





Distributed by:

Keystone Retaining Wall Systems LLC reserves the right to improve its products and make changes to its specification and design without notice. The information contained herein has been compiled by Keystone and to the best of its knowledge, accurately represents the Keystone product and how it may be used in the applications which are illustrated. Site conditions, including load pressures acting on the wall, soil types and drainage conditions, may vary. Final determination of the suitability of the product for the use contemplated and the manner of product use are the sole responsibility of the user. Good construction practices and local building codes require the use of an engineered design when constructing retaining walls or free-standing walls in many conditions. Structural design and analysis should be provided by a qualified engineer.

.....



HWKSAllProducts - 01/2022  
©2022 Keystone Retaining Wall Systems LLC

4444 West 78th Street  
Minneapolis, MN 55435  
[keystonewalls.com](http://keystonewalls.com)