



Your Complete Hardscape Source

STONEGATE® CONTEMPORARY WALL

Granite City Blend



paver-shield™ Pavers

Holland Stone	5
Rustico 6x6 & 6x9	6
Plank Paver	7
Stone Ridge Collection	8
Heritage Slab & Pedestals	10

Environmental Pavers

Eco-Ridge 80MM	12
SF Rima®	13
Eco-Tre	14
Checker Block®	15
Turfstone	16

Landscape Walls

6" Colonial Wall	18
5" Colonial Wall	19
Belvedere Wall	20
Verona Wall	21
Stonegate® Contemporary Wall.....	22
Kodah Wall	23

Retaining Walls

Firma Wall	24
Alta Wall	25
Alta Pro Wall	26
Keystone® Compac III Straight Split.....	27
Redi-Rock.....	28
Outcropping.....	30

Concrete Masonry Units

Concrete Block	31
Bumper Stop	32
Air Conditioning Slabs.....	32

Outdoor Heaters

Dimplex Outdoor Heaters	33
-------------------------------	----

TERMS & CONDITIONS

Color matching and product availability are not guaranteed. Proof of purchase and/or installation contract must be made available prior to or at the time of inspection by an authorized Nicolock representative. Other exclusions apply.

Nicolock / Nicolía Concrete Products is the owner or authorized user of all patents and trademarks for products and designs illustrated herein. Checker Block® & paver-shield® are examples of registered trademarks of Nicolía Concrete Products. SF-Rima® is a trademark of SF Concrete Technology, Inc. • US Patent # : Firma® 6,082,933.

Granite City Blend



MORE COLOR... *More Life!*

THE PAVER-SHIELD™ DIFFERENCE

Our patented process is not a sealant and features a smooth, ultra dense surface and rich vibrant color guaranteed not to fade!



1

Nicolock sources the highest class raw materials in the industry for the highest quality pavers



2

Our state-of-the-art manufacturing process creates a durable base mix



3

Iron oxide bonds with cement molecules resulting in the most vibrant color seen throughout each paver



4

Other quality materials are added to create our **PAVER-SHIELD™ TECHNOLOGY!**



7

PAVER-SHIELD™ is not a sealer, it's built into the manufacturing process for optimal durability



6

The final result is the very best in color, strength, and beauty that will last for generations!



5

PAVER-SHIELD™ gives pavers a tight, smooth surface texture that will not expose heavy aggregate



PAVER-SHIELD™ TECHNOLOGY

Tight, smooth surface texture that is built into the paver, not a sealer like other manufacturers

Ultra dense base mix featuring color throughout the paver ensuring a lifetime of beauty

HOLLAND STONE



A classic brick shape with a flat surface and chamfered edges. Versatile for many residential and commercial projects. Available in 3 1/8" thickness for special order.

	WIDTH	LENGTH	THICKNESS	PCS/SF	SF/PALLET	PCS/PALLET	LBS/PALLET
A	4"	8"	2 3/8"	4.5	120	540	3,100
B	4"	8"	3 1/8"	4.5	96	432	2,880



ADOBE BLEND



AUTUMN BLEND*



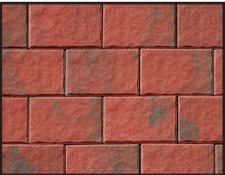
BROWN



CHARCOAL



CRAB ORCHARD BLEND*



FIRE ISLAND BLEND



GOLDEN BROWN BLEND



GRANITE CITY BLEND



MARBLE BLEND*



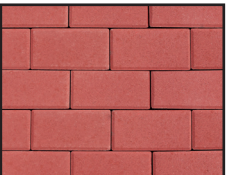
OYSTER BLEND*



PEWTER




RAVEN*



RED



WESTCHESTER BLEND

*Premium Color
 paver-shield™

RUSTICO 6x6 & 6x9



Granite City Blend

Single-sized square and rectangular shapes with a slightly dimpled surface. Chamfered edges and square corners make these perfect for inlays and borders.

	WIDTH	LENGTH	THICKNESS	PCS/SF	SF/PALLET	PCS/PALLET	LBS/PALLET
A	6"	6"	2⅜"	4	120	480	3,027
B	6"	9"	2⅜"	3	113	300	2,982

Sizes sold separately



ADOBE BLEND
(6x9 ONLY)



AUTUMN BLEND*
(6x9 ONLY)



BROWN



CAPPUCCINO BLEND*



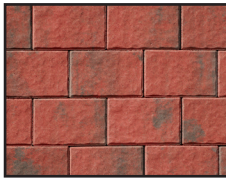
CHARCOAL



CHESAPEAKE BLEND*



CRAB ORCHARD BLEND*
(6x9 ONLY)



FIRE ISLAND BLEND
(6x9 ONLY)



GOLDEN BROWN BLEND
(6x9 ONLY)



GRANITE CITY BLEND



GRAPHITE PEARL BLEND*
(6x9 ONLY)



HUDSON VALLEY BLEND
(6x9 ONLY)



MARBLE BLEND*
(6x9 ONLY)



OCEANIC BLUE*
(6x9 ONLY)



OYSTER BLEND*



PENNSYLVANIA BLUE**
(6x9 ONLY)



RAVEN*



SOUTH BAY BLEND*



TRAVERTINA*



WESTCHESTER BLEND

*Premium Color
**Deluxe Color



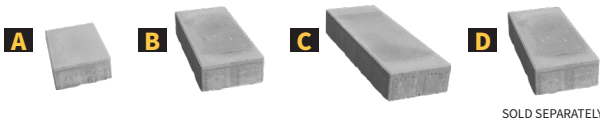
PLANK PAVER



The long and narrow design of this Nicolock favorite gives a finished and sleek appearance to complement modern design trends.

	WIDTH	LENGTH	THICKNESS	PCS/SF	SF/PALLET	PCS/PALLET	LBS/PALLET
A	6"	9"	2¾"	2.66		54	
B	6"	13"	2¾"	1.85	103	81	3,122
C	6"	17"	2¾"	1.41		54	
D	6"	13"	2¾"	1.85	103	189	3,122

Size D sold separately



GRANITE CITY BLEND



GRAPHITE PEARL BLEND*



MARBLE BLEND*



PEWTER



RAVEN*



SOUTH BAY BLEND*



WESTCHESTER BLEND

*Premium Color
paver-shield™

STONE RIDGE COLLECTION



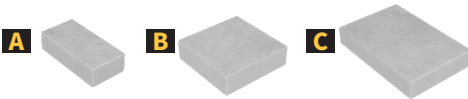
Graphite Pearl Blend

Stone Ridge

Multi-sized rectangular shapes. Slightly textured riven surface. Slightly chamfered edge. Can be combined with Stone Ridge XL.

	WIDTH	LENGTH	THICKNESS	PCS/SF	SF/PALLET	PCS/PALLET	LBS/PALLET
A	4½"	9"	2⅝"	3.8	110	130	2,950
B	9"	9"	2⅝"	1.9		60	
C	9"	13½"	2⅝"	1.3		50	

Sizes not sold separately



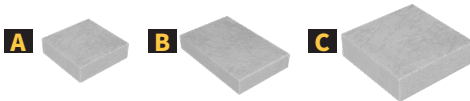
Chesapeake Blend

Stone Ridge XL

Multi-sized rectangular shapes. Slightly textured riven surface. Slightly chamfered edge. Can be combined with Stone Ridge. Not recommended for vehicular applications.

	WIDTH	LENGTH	THICKNESS	PCS/SF	SF/PALLET	PCS/PALLET	LBS/PALLET
A	9"	9"	2⅝"	1.9	110	20	2,950
B	9"	18"	2⅝"	.93		50	
C	18"	18"	2⅝"	.46		20	

Sizes not sold separately





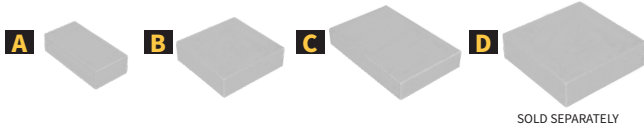
Granite City Blend

Stone Ridge Contemporary

Multi-sized rectangular shapes with a smooth and modern finish. Slightly chamfered edge.

	WIDTH	LENGTH	THICKNESS	PCS/SF	SF/PALLET	PCS/PALLET	LBS/PALLET
A	4½"	9"	2⅝"	3.8		130	
B	9"	9"	2⅝"	1.9	110	60	2,950
C	9"	13½"	2⅝"	1.3		50	
D	18"	18"	2⅝"	2.25	131	60	3,537

Size D sold separately



SOLD SEPARATELY



ADOBE BLEND



AUTUMN BLEND*



CAPPUCCINO BLEND*



CHESAPEAKE BLEND*



CRAB ORCHARD BLEND*



GOLDEN BROWN BLEND



GRANITE CITY BLEND



GRAPHITE PEARL BLEND*



HUDSON VALLEY BLEND



MARBLE BLEND*



OCEANIC 5*



OCEANIC BLUE*



OYSTER BLEND*



PECONIC 6*



PENNSYLVANIA BLUE**



SOUTH BAY BLEND*



TRAVERTINA*



WESTCHESTER BLEND

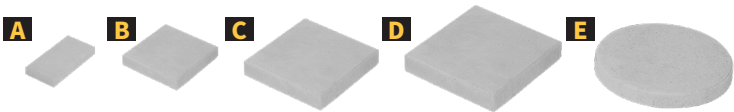
*Premium Color
paver-shield™

HERITAGE SLAB & PEDESTALS



Heritage Slab is a great stone for various architectural applications including rooftops and plazas. Suitable for overlays and at-grade applications.

	WIDTH	LENGTH	THICKNESS	PCS/SF	SF/PALLET	PCS/PALLET	LBS/PALLET
A	8"	16"	2"	1.13	80	90	1,783
B	12"	12"	2"	1	120	120	2,654
C	18"	18"	2"	.44	135	60	2,990
D	24"	24"	2"	.25	80	20	1,776
E	18" Round		2"	n/a	n/a	40	1,562



BROWN



CHARCOAL



DOVE GRAY
(18x18 & 24x24 only)



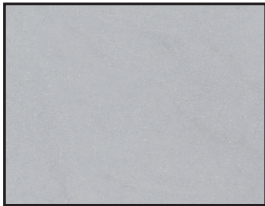
GRANITE CITY BLEND



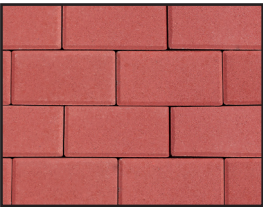
GRAPHITE PEARL BLEND*
(18x18 & 24x24 only)



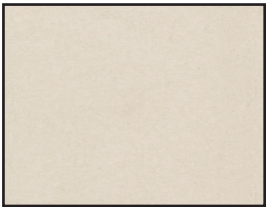
OCEANIC BLUE*
(18x18 & 24x24 only)



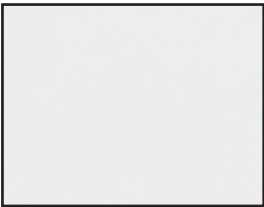
PEWTER



RED



SAHARA*
(18x18 & 24x24 only)



SNOW*
(18x18 & 24x24 only)



TRAVERTINA*
(18x18 & 24x24 only)

*Premium Color
paver-shield™

MRP Supports

Decking and paver pedestal systems make a great alternative to traditional paving projects. These systems provide support for removeable floor paneling, are quick and easy to install, improve ventilation to prevent water and mold damage, and can reduce energy consumption. Adjustable self-leveling supports are slip resistant and can be used to compensate for slopes and absorb noise. Additional units available other than shown below. Project take-offs available upon request.



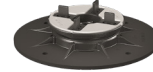
PRIME-PR1
covers heights:
1.20"-2.55"



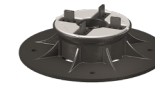
PRIME-PR2
covers heights:
2.55"-6.10"



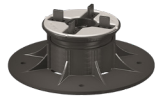
PRIME-PR3
covers heights:
6.10"-16"



SE0-P
covers heights:
1.125"-1.5"



SE1-P
covers heights:
1.5"-2"



SE2-P
covers heights:
2"-3"



SE3-P
covers heights:
3"-4.75"



SE4-P
covers heights:
4.75"-6.75"



SE5-P
covers heights:
6.75"-8.5"



The adjustment key allows you to level your final grade by adjusting the height of the pedestal WITHOUT removing the paver. This unique tool helps save on labor costs, assists in reducing the opportunity for injuries caused by repeatedly removing heavy pavers in order to shim to achieve a level surface.

to view all products and information, please visit www.mrpsupports.com



ADVANTAGES OF PEDESTAL SUPPORTS:

- Hides pipes and equipment while providing easy access for maintenance
- Absorbs expansion and structural movement
- Eliminates requirements of surface preparation
- Compensates for uneven and irregularities in the surface to create a flat surface
- Facilitates fast water drainage to resist mold
- Provides better thermal insulation
- Ensures fast installation to save money

Matrix Pedestals



5X ADJUSTABLE PEDESTAL
covers heights:
1.25"-2"
3/16" spacer tab 9/16 top tab



6X ADJUSTABLE PEDESTAL
covers heights:
2"-3"
3/16" spacer tab 9/16 top tab



7X ADJUSTABLE PEDESTAL
covers heights:
3"-4.5"
3/16" spacer tab 9/16 top tab



8X ADJUSTABLE PEDESTAL
covers heights:
4.5"-7.5"
3/16" spacer tab 9/16 top tab



8X COUPLER
covers heights:
2.5"-4"



PAVER PEDESTAL
6 13/16" X 6 13/16" X 9/16"
1/8" spacer tab 15/16 top tab



PAVER PEDESTAL
6 13/16" X 6 13/16" X 9/16"
1/8" spacer tab 9/16 top tab



PRODUCT SHIM
1/8"



PRODUCT SHIM
1/16"



to view all products and information, please visit www.matrixpedestals.com


ECO-RIDGE 80MM



Granite City Blend

An oversized brick shape with a slightly textured riven surface. Slightly chamfered edges with a 13% open surface area. Joint opening is compliant with the Americans with Disabilities Act. (ADA)

	WIDTH	LENGTH	THICKNESS	SF/PALLET	PCS/PALLET	LBS/PALLET
A	4¾"	9½"	3⅞"	100	320	3,389



GRANITE CITY BLEND



OYSTER BLEND*

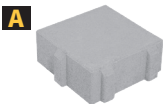


SF-RIMA



A square shape and flat surface give these pavers a contemporary look. Chamfered edges give them a real stone feel. 10% open surface area and joint opening make these stones compliant with the Americans with Disabilities Act. (ADA)

	WIDTH	LENGTH	THICKNESS	SF/PALLET	PCS/PALLET	LBS/PALLET
A	8"	8"	3 1/8"	91	192	3,218



GOLDEN BROWN BLEND



GRANITE CITY BLEND





Granite City Blend

Textured, chamfered edges give these pavers an authentic, stone feel yet provide a 10% open surface area and joint opening that is compliant with the Americans with Disabilities Act. (ADA)

	WIDTH	LENGTH	THICKNESS	SF/PALLET	PCS/PALLET	LBS/PALLET
A	8½"	5½"	3⅞"	96	160	3,284
B	8½"	8½"	3⅞"			
C	8½"	14¼"	3⅞"			

Sizes not sold separately



ADOBE BLEND



GRANITE CITY BLEND



OYSTER BLEND*



WESTCHESTER BLEND

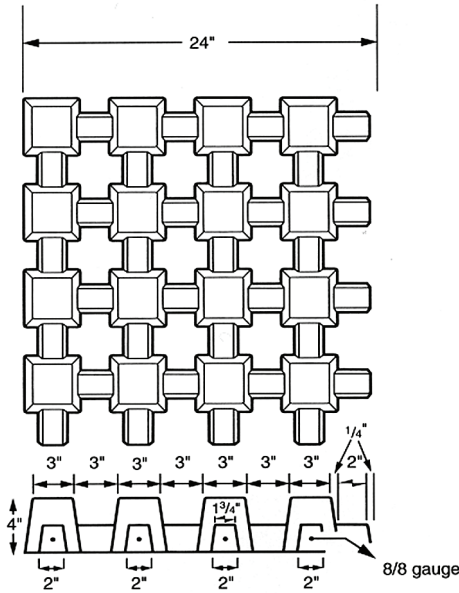
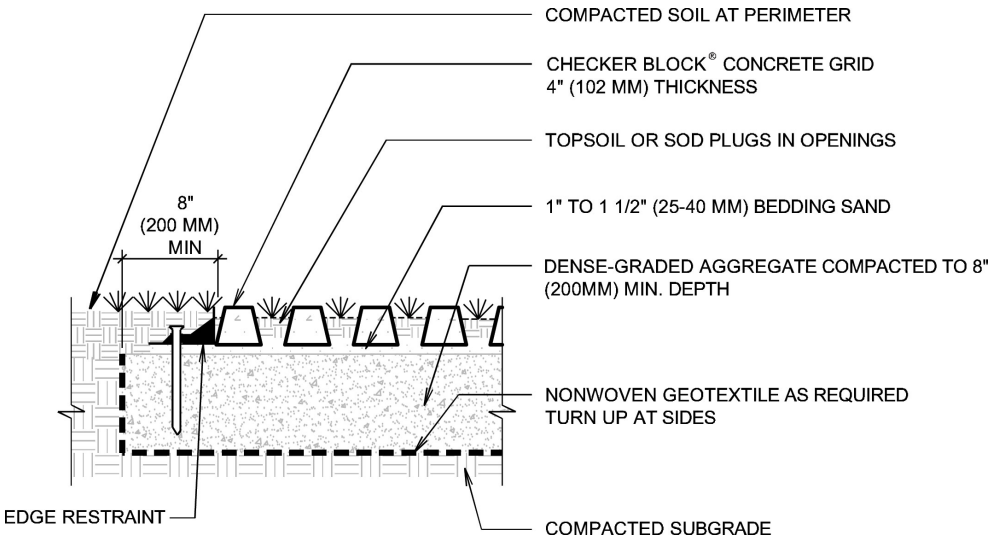
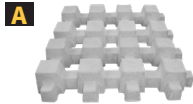


CHECKER BLOCK®



Gives you the strength of concrete with steel reinforcement in areas where you wish to maintain a grassy look including overflow parking, service roads, tree pits and fire lanes. It is also ideal for stabilizing embankments along streams, rivers and lakes. 75% surface open area for excellent drainage. Checker Block, a permeable reinforced grid paver, satisfies the requirements of meeting or exceeding an H20 loading.

	WIDTH	LENGTH	THICKNESS	SF/PALLET	PCS/PALLET	LBS/PALLET
A	24"	24"	4"	80	20	2,000



NATURAL



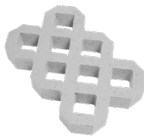
TURFSTONE



Lattice concrete grid in rectangular pieces allows rainwater to gradually filter back into the soil. 40% flat, open surface area.

	WIDTH	LENGTH	THICKNESS	SF/PALLET	PCS/PALLET	LBS/PALLET
A	16"	24"	3 1/8"	93	35	2,100

A




NATURAL



Nicolock Walls are available in a variety of styles and include features designed for multiple applications. To help you select the best wall for your installation, please review the chart below. Additional information is included on each product page.

WALL STYLE	SYSTEM	 Engineered Retaining Wall System	CORNERS	WALL HEIGHTS*		ALIGNMENT	SETBACK	CORE	FEATURES	OUTDOOR LIVING KITS
				GRAVITY [+/-]	REINFORCED [+/-]					
LANDSCAPE WALLS										
Mini Colonial	4-Piece	N/A	Yes/Split	1.5’	N/A	Concrete Adhesive	Vertical	Solid	Double Sided	N/A
5" Colonial	4-Piece	Yes	Yes/Split	2.5’	6’	Tongue & Groove	Vertical or 1.5"	Solid	Double Sided	N/A
6" Colonial	4-Piece	N/A	Yes/Split	1.5’	N/A	Concrete Adhesive	Vertical	Solid	Double Sided	N/A
Verona	1-Piece	N/A	Yes	1.5’	N/A	Concrete Adhesive	Vertical	Solid	Double Sided	Yes
Stonegate®	3-Piece	Yes	Yes	2.5’	6’	Pin	Vertical or 1”	Solid	Double Sided	Yes
Belvedere	6-Piece	Yes	Yes	2.0’	6’	Concrete Adhesive	1/2"	Solid	Double Sided	Yes
Kodah	4-Piece	Yes	Yes	2.5’	6’	Concrete Adhesive	3/4"	Solid	Double Sided	N/A
RETAINING WALLS										
Firma®	1-Piece	Yes	Yes	3.0’	12’	Tongue & Groove	3/4”	Solid	Single Sided	N/A
Alta	1-Piece	Yes	Yes	3.0’	12’	Rear Lip	1”	Hollow	Single Sided	N/A
Alta Pro	1-Piece	Yes	Yes	3.0’	40’	Rear Lip	1"	Hollow	Single Sided	N/A
Compac III	1-Piece	Yes	Yes	3.0’	40’	Pin	Near Vertical or 1"	Hollow	Single Sided	N/A
Outcropping	12-Piece	Yes	Yes	6’	15’	Shear Heel Lugs	14 Degrees	Solid	Single Sided	N/A
Redi-Rock®	Multi-Piece	Yes	Yes	25’	60’	Knob & Groove	0, 1, 5, 27½ & 43 Degree options	Solid & Hollow	Single, Double or Triple Sided	N/A

Wall heights shown are intended as a guide and not for construction purposes. **Note: Gravity walls rely on unit weight and unit set-back to retain soils. Reinforced walls rely on unit weight, unit set-back and geogrid to retain and stabilize soils.*

 Engineered Retaining Wall System

The symbol signifies that this product is suitable for building elevated wall heights using geogrid reinforcement or other design methods. Consult a licensed engineer for design assistance.

6" COLONIAL WALL

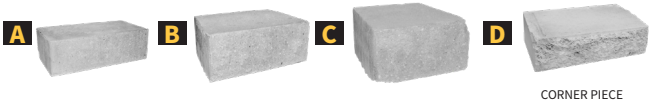


Chesapeake Blend

The Colonial Wall System features a distinctive double-sided face, hard-split finish. You can build the 3" or 6" wall individually or combine them for added dimension.

	HEIGHT	WIDTH	DEPTH	SF/PALLET	PCS/PALLET	LBS/PALLET
A	6"	16"	9"	35	15	4,068
B	6"	12"	9"		25	
C	6"	9"	9"		25	
D	6"	16"	9"		10	

Sizes not sold separately



ADOBE BLEND



BLUESTONE*



CAPPUCCINO BLEND



CHESAPEAKE BLEND*



CRAB ORCHARD BLEND



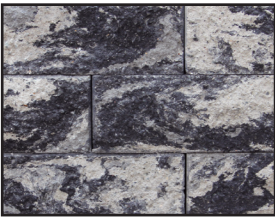
FIRE ISLAND BLEND



GOLDEN BROWN BLEND



GRANITE CITY BLEND



GRAPHITE PEARL BLEND*



HUDSON VALLEY BLEND



OYSTER BLEND



SOUTH BAY BLEND



TRAVERTINA*



WESTCHESTER BLEND

*Premium Color

5" COLONIAL WALL



The Colonial Wall System features a distinctive double-sided face, hard-split finish. The tongue and groove locking mechanism will ensure a solid connection and helps facilitate rapid installation. There is also a prepackaged Colonial Pier to add the finishing touch to your wall.

	HEIGHT	WIDTH	DEPTH	SF/PALLET	PCS/PALLET	LBS/PALLET
A	5"	16"	9"	35	18	3,548
B	5"	12"	9"		30	
C	5"	9"	9"		30	
D	5"	16"	9"		12	
Sizes not sold separately						



ADOBE BLEND



BLUESTONE*



CHESAPEAKE BLEND*



CRAB ORCHARD BLEND



FIRE ISLAND BLEND



GOLDEN BROWN BLEND



GRANITE CITY BLEND



OYSTER BLEND



TRAVERTINA*



WESTCHESTER BLEND

*Premium Color

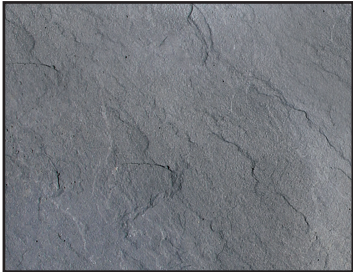
BELVEDERE WALL



A Belvedere Wall provides the rich texture of quarried stone for an organic finish without the expense. Create warm, rustic silhouettes with our Belvedere wall.

	HEIGHT	WIDTH	DEPTH	SF/PALLET	PCS/PALLET	LBS/PALLET
A	3"	18"	9"	27	12	2,475
B	6"	18"	9"		12	
C	3"	12"	9"		12	
D	6"	12"	9"		12	
E	3"	6"	9"		12	
F	6"	6"	9"		12	

Sizes not sold separately



BLUESTONE



MOCHA



YORK BROWN



VERONA WALL



Chesapeake Blend

The Verona Wall’s antiqued, double-sided finish mirrors the look of natural stone. It’s a versatile wall to construct almost any outdoor feature including free-standing walls, steps, outdoor kitchens and fireplaces. You can also build Verona Piers to complement your wall.

	HEIGHT	WIDTH	DEPTH	PCS/SF	SF/PALLET	PCS/PALLET	LBS/PALLET
A	4"	12"	8"	3	32	96	2,650



ADOBE BLEND



BLUESTONE*



CHARCOAL



CHESAPEAKE BLEND*



CRAB ORCHARD BLEND



GOLDEN BROWN BLEND



GRANITE CITY BLEND



GRAPHITE PEARL BLEND*



OCEANIC BLUE*



OYSTER BLEND



SOUTH BAY BLEND



TRAVERTINA*



WESTCHESTER BLEND

*Premium Color

STONEGATE® CONTEMPORARY WALL

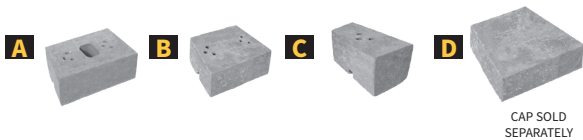


South Bay Blend

The 3-piece Stonegate® Contemporary Wall System features a unique, modern contemporary finish on three sides. It's offered in three face lengths and has a matching cap. Specialized pin system allows vertical to 1" setback.

	HEIGHT	WIDTH	DEPTH	SF/PALLET	PCS/PALLET	LBS/PALLET
A	6"	16"/14"	10"	30	60	2,623
B	6"	12"/10"	10"			
C	6"	6"/4"	10"			
D	3"	12"/10"	11"	66 LF	72	2,033

Size D sold separately



Made in New York, additional freight rates may apply.



*Premium Color

KODAH WALL



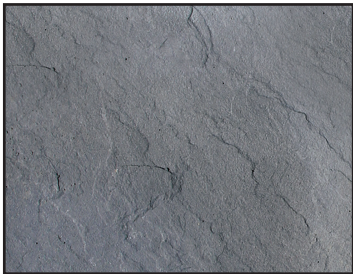
Kodah Wall is a one-of-a kind large scale retaining wall system. Its modern, linear proportions combined with its rough, quarried stone texture make it perfect for a variety of applications. The Kodah Wall also makes it easier than ever to provide you with the big block look without the over-the-top installation costs.

	HEIGHT	WIDTH	DEPTH	SF/PALLET	PCS/PALLET	LBS/PALLET
A	6"	42"	10½"	21	6	2,400
B	6"	30"	10½"		3	
C	6"	21"	10½"		6	
D	6"	12"	10½"		3	
E	6"	21"	10½"	31½	24	2,400

Size E sold separately



CORNER SOLD SEPARATELY



BLUESTONE



MOCHA



YORK BROWN



FIRMA WALL



Mojave (special order color)

The Firma® Wall is a segmental retaining wall with a natural split-face texture. Its classic line complements any natural or architectural landscape. A solid block with tapered sides, this wall system combines rich color, form and function into your project.

	HEIGHT	WIDTH	DEPTH	PCS/SF	SF/PALLET	PCS/PALLET	LBS/PALLET
A	6"	16"	12"	1.5	26.6	40	3,187



ADOBE BLEND



CRAB ORCHARD BLEND



GOLDEN BROWN BLEND



GRANITE CITY BLEND



OYSTER BLEND

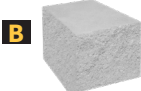
ALTA WALL



Alta Wall is a versatile wall for everyday landscape applications. Its tapered design simplifies installation of inside and outside curves so you can design with freedom. The hollow core design and rear lip connection make this wall system a go-to system for professionals.

	HEIGHT	WIDTH	DEPTH	PCS/SF	SF/PALLET	PCS/PALLET	LBS/PALLET
A	6"	16"	12"	1.5	26.6	40	1,962
B	6"	8"	12"	2	24	48	2,164

Sizes sold separately



CORNER SOLD SEPARATELY



ADOBE BLEND



FIRE ISLAND BLEND



GOLDEN BROWN BLEND



GRANITE CITY BLEND



TRAVERTINA*



WESTCHESTER BLEND

*Premium Color

ALTA PRO WALL

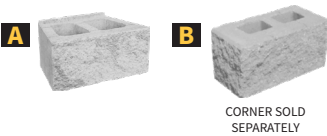
Granite City Blend



A taller version of our beautiful Alta Wall, this system helps landscape and hardscape professionals create stunning outdoor living spaces with structural integrity.

	HEIGHT	WIDTH	DEPTH	PCS/SF	SF/PALLET	PCS/PALLET	LBS/PALLET
A	8"	18"	12"	1	40	40	2,404
B	8"	18"	9"	1	32	32	2,509

Sizes sold separately



ADOBE BLEND



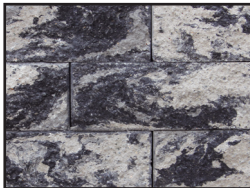
FIRE ISLAND BLEND



GOLDEN BROWN BLEND



GRANITE CITY BLEND



GRAPHITE PEARL BLEND*



HUDSON VALLEY BLEND



TRAVERTINA*



WESTCHESTER BLEND

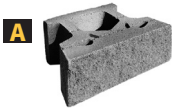
*Premium Color

KEYSTONE® COMPAC III STRAIGHT SPLIT



The Compac III's shape allows for tight radius curves and vertical core alignments. This wall can do it all with vertical or battered setback construction options. With triangular-shaped receiving holes, construction adjustments are simplified. Natural stone appearance and rich colors complement any setting.

	HEIGHT	WIDTH	DEPTH	PCS/SF	SF/PALLET	PCS/PALLET	LBS/PALLET
A	8"	18"	12"	1	40	40	2,417



ADOBE BLEND



FIRE ISLAND BLEND



GOLDEN BROWN BLEND



GRANITE CITY BLEND

1/2" x 5 1/4"
Fiberglass
Alignment Pins



SOLD SEPARATELY

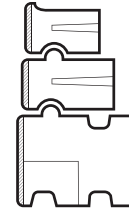
Made in New York, additional freight rates may apply.

REDI-ROCK® WALL SOLUTIONS

Gravity, reinforced, hybrid, and freestanding walls come together to create optimized solutions.

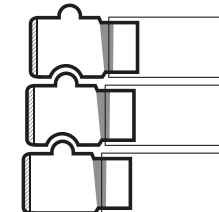
GRAVITY RETAINING WALLS

- Build walls over 20 feet tall
- Reduce excavation and use a smaller footprint without geogrid
- Install quickly with a machine and small crew



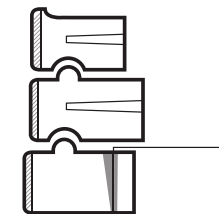
REINFORCED RETAINING WALLS

- Build walls over 50 feet tall
- Eliminate geogrid connection failures with positive connection blocks
- Support heavy live loads



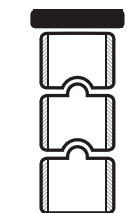
HYBRID WALLS

- Blend gravity and reinforced sections
- Combine precast modular blocks with cast-in-place
- Maintain seamless appearance



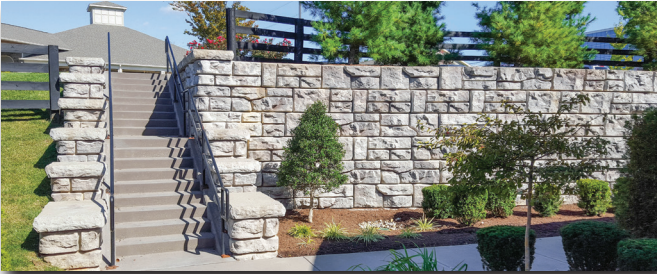
FREESTANDING WALLS

- Integrate parapets with other walls seamlessly
- Build stand-alone structures
- Create great looking results with texture on multiple sides



REDI-ROCK TEXTURE: LEDGESTONE

Redi-Rock Ledgestone blocks, available in four natural colors, give projects a random, stacked stone look. Because they're made using architectural-grade precast concrete, the depth and level of detail in the texture is outstanding.



Ledgestone Block Specifications

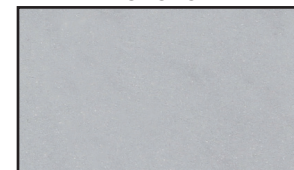
- Trapezoidal shape allows convex and concave radii
- 5.5 inch deep texture
- Rich formulated colors to mimic the look of natural stone
- Ten individual face molds offer up to 115 square feet of non-repeating patterns
- Wet-cast concrete gives a greater level of detail and durability



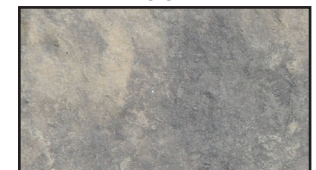
BLUESTONE



MOCHA



PEWTER



YORK BROWN

OUTCROPPING



BLUESTONE



MOCHA



YORK BROWN

With this large rock landscaping look, your new retaining wall, stairs or poolscape will stand out among your neighbors. Get the look you want without sacrificing the structurally sound solution you need.

Pallet A

	HEIGHT	WIDTH	DEPTH	SF/PALLET	PCS/PALLET	LBS/PALLET
A	12"	42"	24"/20"	18	4	4,000
B	12"	48"	24"/20"			
C	12"	60"	24"/20"			
D	12"	66"	24"/20"			

Sizes not sold separately



Pallet B

	HEIGHT	WIDTH	DEPTH	SF/PALLET	PCS/PALLET	LBS/PALLET
A	6"	24"	24"/20"	18	6	4,000
B	6"	36"	24"/20"			
C	6"	48"	24"/20"			
D	12"	36"	24"/20"			
E	12"	54"	24"/20"			
F	12"	72"	24"/20"			

Sizes not sold separately



Pallet C

	HEIGHT	WIDTH	DEPTH	SF/PALLET	PCS/PALLET	LBS/PALLET
A	6"	24"	24"/20"	18	4	4,000
B	6"	36"	24"/20"			
C	18"	60"	24"/20"			
D	24"	48"	24"/20"			

Sizes not sold separately



Corners

	CORNERS	HEIGHT	WIDTH	DEPTH	PCS/PALLET	LBS/PALLET
A	6" CORNER	6"	39"	27"	1-6	489
B	12" CORNER	12"	48"	30"	1-4	1,222

Sizes sold separately



CONCRETE BLOCK

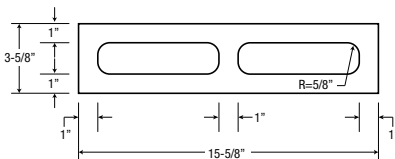
We only utilize high quality raw materials to manufacture our concrete masonry units (“CMU”). All of our CMUs are tested under ASTM C140 guidelines. These units meet and exceed the absorption and compressive strength requirement of ASTM C90.

	PRODUCT	HEIGHT	WIDTH	DEPTH	LBS / PC	PCS / PALLET	LBS / PALLET
A	4" Hollow	3⅝"	15⅝"	7⅝"	24	216	5,184
B	4" Solid	3⅝"	15⅝"	7⅝"	32	90	2,880
C	6" Hollow	5⅝"	15⅝"	7⅝"	32	162	5,184
D	8" Hollow	7⅝"	15⅝"	7⅝"	35	108	3,780
E	10" Hollow	9⅝"	15⅝"	7⅝"	39	90	3,510
F	12" Hollow	11⅝"	15⅝"	7⅝"	50	72	3,600

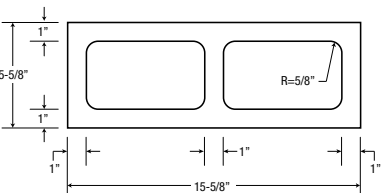
All Concrete Masonry Units meet and exceed the minimum values as required per ASTM C90.

*Available in both smooth and split-face textures

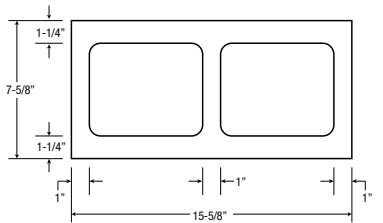
4-Inch Unit Configurations



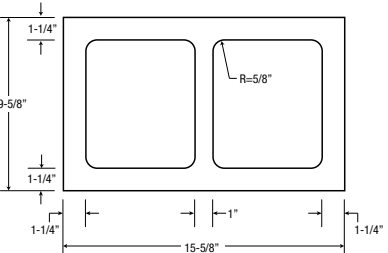
6-Inch Unit Configurations



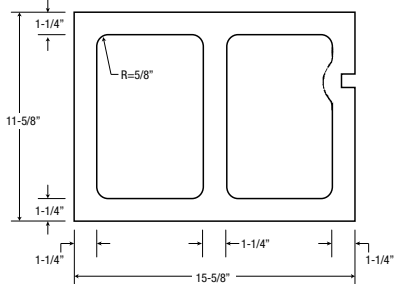
8-Inch Unit Configurations



10-Inch Unit Configurations



12-Inch Unit Configurations



BUMPER STOPS

Protects structures and vehicles from vehicular impact. Manufactured high strength steel and reinforced concrete. For use in residential and commercial applications. Sloped design maximizes durability and safety, protects vehicular wheels.

	HEIGHT	WIDTH	DEPTH	PCS/SF	PCS/PALLET	LBS/PALLET
A	5"	72"	8"	20	3,500	2,417



AIR CONDITIONING SLABS

Concrete slabs and pads are the predominant support structure of air conditioner units across the country. They keep your expensive AC unit from sitting on the ground, which shortens the life of the unit by years.

	HEIGHT	WIDTH	DEPTH	PCS/PALLET	LBS/PALLET
A	2"	26"	36"	18	2,700
B	2"	36"	36"	10	2,050
C	2"	30"	42"	10	2,250



DIMPLEX OUTDOOR HEATERS

Are you looking to warm up an outdoor living area? There are several options, from infrared, propane, and natural gas heating, so you can provide outdoor comfort all year long.

Dimplex heaters are not only designed to be functional, efficient and safe, they are designed to look beautiful in your space. Whether you need extra comfort in your courtyard or restaurant patio, you will love your Dimplex heater.



Dimplex DLW Series Outdoor/Indoor Radiant Heater, White

DLW3200W24



- Effective radiant heat that warms like the sun, heating people and objects with zero glare
- Silent, maintenance free operation
- IP 55 rated, weather-proof construction allows year-round enjoyment
- Designed for permanent hardwired installations on a dedicated 240V circuit

Dimplex DLW Series Outdoor/Indoor Radiant Heater, Black

DLW2400B24



- Effective radiant heat that warms like the sun, heating people and objects with zero glare
- Silent, maintenance free operation
- IP 55 rated, weather-proof construction allows year-round enjoyment
- Designed for permanent hardwired installations on a dedicated 240V circuit

Dimplex Outdoor Portable Infrared Propane Heater, 31,500 BTU

DGR32PLP



- Powerful, stylish and portable heat for outdoor areas
- Heat on demand - when and where you need it
- Durable stainless steel construction
- Advanced safety features including world class wind protection up to 9.9 Mph/16 km/hr.

Dimplex Outdoor Wall-mounted Natural Gas Infrared Heater, 31,500 BTU

DGR32WNG



- Powerful, stylish and space-saving heat for outdoor areas
- Heat on demand - when and where you need it
- Durable stainless steel construction
- Advanced safety features including world class wind protection up to 9.9 Mph/` 6 Kph

STONE RIDGE XL

Oceanic Blue





LOCATIONS

New York

Corporate Headquarters

612 Muncy Avenue • Lindenhurst, NY 11757

P: 631.669.0700 • F: 631.669.0711

Nicostone by Nicolock

200 Henry Street • Lindenhurst, NY 11757

P: 631.669.0600 • F: 631.669.8052

Albany

801 Watervliet Shaker Road • Latham, NY 12110

P: 518.888.2731 • F: 518.252.4937

New Jersey

482 Houses Corner Rd • Sparta, NJ 07871

P: 551.232.6443 • F: 973.425.5188

New Jersey Design Center

620 Cedar Swamp Road • Jackson, NJ 08527

P: 201.932.4500 • F: 732.960.9950

NPS Outdoor Living Showroom

9 Aaron Way • Sparta, NJ 07871

P: 908.482.8483

New England

99 Stoddard Avenue • North Haven, CT 06473

P: 203.234.2800 • F: 203.985.0381

Massachusetts

168 Mendon Street • Bellingham, MA 02019

P: 508.298.2243 • F: 508.590.7678

Maryland

8400 Progress Court • Frederick, MD 21701

P: 301.620.0100 • F: 301.620.0007

Delaware

1000 South Market Street • Wilmington, DE 19801

P: 302.981.0986 • F: 302.691.4500

Virginia

9135 Barricade Lane • Mechanicsville, VA 23116

P: 571.332.3513 • F: 571.406.1251



CAT#NCC MMXXIII | ©nicolock 2023 | all rights reserved