

Outdoor Living Collection

NICOLOCK[®]
PAVING STONES • RETAINING WALLS • OUTDOOR LIVING
 paver-shield[™]



**OUTDOOR LIVING
DISTRIBUTION
CATALOG**

AMERICAN MADE GRILLS



ATLAS



36" Atlas Built-In Grill
ATS36



Atlas Double Side Burner
ATSSB2

ENCORE



36" Encore Built-In Grill
ENC36



54" Encore Built-In Grill
ENC54



Encore Power Burner
ENCPB2

MUSCLE



36" Muscle Built-In Grill
MUS36



54" Muscle Built-In Grill
MUS54



Muscle Power Burner
MUSPB2

ESTATE



30" Estate Built-In Grill
EST30



36" Estate Built-In Grill
EST36



42" Estate Built-In Grill
EST42

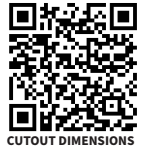


Estate Double Side Burner
ESTSB2



Estate Power Burner
ESTPB2

GRILL LINERS ARE
AVAILABLE FOR ALL GRILLS
AND SIDE BURNERS



CUTOUT DIMENSIONS



Visit www.americanmadegrills.com to view the full product line

SUNFIRE GRILLS



SUNFIRE



32" SunFire Built-In Grill
SF432



38" SunFire Built-In Grill
SF538



Single Side Burner
SFSB1



Double Side Burner
w/LED illumination
SFPB2



Power Burner
SFPB

GRILL LINERS ARE
AVAILABLE FOR ALL GRILLS
AND SIDE BURNERS



CUTOUT DIMENSIONS



Visit www.sunfiregrills.com to view the full product line

SUMMERSET GRILLS



SUMMERSET

SIZZLER



26" Sizzler Built-In Grill
SIZ26



32" Sizzler Built-In Grill
SIZ32



40" Sizzler Built-In Grill
SIZ40



Sizzler Double Side Burner
SIZB2

SIZZLER PRO



32" Sizzler Pro Built-In Grill
SIZPRO32



40" Sizzler Pro Built-In Grill
SIZPRO40



Sizzler Pro Double Side Burner
w/LED Illumination
SIZPROB2

GRILL LINERS ARE
AVAILABLE FOR ALL GRILLS
AND SIDE BURNERS



CUTOUT DIMENSIONS

TRL



32" TRL Built-In Grill
TRL32



38" TRL Built-In Grill
TRL38



44" TRL Built-In Grill
TRL44



TRL Power Burner
w/LED Illumination
TRLPB2



TRL Double Side Burner
w/LED Illumination
TRLSB2



TRL Sear Side Burner
TRLSS

ALTURI



30" Alturi Built-In Grill
ALT30T



36" Alturi Built-In Grill
ALT36T



42" Alturi Built-In Grill
ALT42T



Alturi Power Burner
w/LED Illumination
ALTPB2



Alturi Double Side Burner
w/LED Illumination
ALTBS2



Alturi Sear Side Burner
w/LED Illumination
ALTSS

GRIDDLE



SummerSet Griddle
GRID30



Visit www.summersetgrills.com to view the full product line

STAINLESS ACCESSORIES

BARS & SINKS



19" Undermount Sink
SSNK-19U



15" Drop-in Sink
SSNK-15D



30" Lighted Beverage & Prep Station
SSBC-30L



32" Outdoor Rated Farmhouse Sink
SSNK-32FH



17" 1.7C Drop-in Cooler
SSIC-17



28" 2.7C Drop-in Cooler
SSIC-28

REFRIGERATION



15" 3.2C Outdoor Rated Fridge with
Glass Door
SSRFR-15G
ALSO AVAILABLE IN STAINLESS STEEL DOOR: SSRFR-15S



15" 3.2C Outdoor Rated Dual Zone
Wine Cooler
SSRFR-15WD
ALSO AVAILABLE IN SINGLE ZONE: SSRFR-15W



21" 4.2C Compact Refrigerator
SSRFR-21S
ALSO AVAILABLE IN DELUXE: SSRFR-21D



24" 5.3C Deluxe Outdoor Rated
Refrigerator
SSRFR-24D
ALSO AVAILABLE IN STANDARD: SSRFR-24S



24" 5.3C Deluxe Outdoor Rated
2-Drawer Refrigerator
SSRFR-24DR2



24" 6.6C Deluxe Outdoor Rated
Kegerator Single Tower
SSRFR-24DK1
ALSO AVAILABLE IN DOUBLE TOWER: SSRFR-24DK2



15" Ice Maker
SSIM-15



24" Outdoor Rated Dual Zone
Wine Cooler
SSRFR-24WD
ALSO AVAILABLE IN SINGLE ZONE: SSRFR-24W

DOORS | DRAWERS | COMBOS



27" Horizontal Access Door
SSDH-27



33" Double Access Door
SSDD-33



20x27" Vertical Access Door
SSDV-20



33" 3-Drawer & Access
Door Combo
SSDC3-33



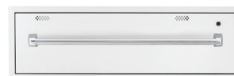
30" 2-Drawer & Access
Door Combo
SSDC2-30



20" Vented Liquid Propane Tank
or Trash Drawer
SSDR1-20LP



33" 2-Drawer & Vented LP Tank
Pullout Drawer Combo
SSDC2-33LP



36" Warming Drawer
SSWD-36



36" 2-Drawer & Access
Door Combo
SSDC2-36



17" Vertical 2-Drawer & Paper
Towel Holder Combo
SSTDC-17



17" Double Drawer
SSDR2-17



17" Paper Towel Holder
SSTH-17



42" 2-Drawer & Access
Door Combo



32" Double Horizontal Drawer
SSDR2-32H



17" Single Drawer
SSDR1-17



17" Triple Drawer
SSDR3-17



33" 2-Drawer & Access Door Combo
SSDC2-33



26" Utensil Drawer
SSDR1-26U



20" Trash Recycling 2-Bin
Pullout Drawer
SSTD2-20

Visit
www.summersetgrills.com
for full line of
accessories and sizes

SEGMENTAL KITCHEN SYSTEMS

Create your customized outdoor dining area the way you envision it. Use our Segmental Kitchen Systems to create grill islands, kitchens, bar spaces and much more. Possibilities are endless when you choose from a variety of cabinet options and stainless appliances.



The Sierra



INCLUDES:

- 3 Drawer Cabinet
- Cold Storage Cabinet
- 48" Grill Cabinet
- (2) End Panel Cabinets
- Trash Drawer / LP Cabinet

The Lexington



INCLUDES:

- 3 Drawer Cabinet
- Cold Storage Cabinet
- 48" Grill Cabinet
- (2) End Panel Cabinets
- 6" Filler Cabinet
- 12" Filler Cabinet
- Trash Drawer / LP Cabinet
- Universal Corner Cabinet

Use one of our 3 combinations to the right, or choose multiple pieces below, to create your custom look:

- 3 Drawer Cabinet
- 12" Filler Cabinet
- Cold Storage Cabinet
- Side Burner Cabinet
- 48" Grill Cabinet
- Power Burner Cabinet
- 54" Grill Cabinet
- Sink Cabinet
- 48" Door / Drawer Cabinet
- Trash Drawer / LP Cabinet
- End Panel Cabinet
- Universal Corner Cabinet
- 6" Filler Cabinet



**FULL CUSTOM KITCHENS AVAILBLE
FOR QUOTES, CONTACT
INFO@NICOLock.COM**

The Ultimate



INCLUDES:

- 3 Drawer Cabinet
- Cold Storage Cabinet
- 48" Grill Cabinet
- 48" Door / Drawer Cabinet
- (2) End Panel Cabinets
- 6" Filler Cabinet
- 12" Filler Cabinet
- Trash Drawer / LP Cabinet
- (2) Universal Corner Cabinets

BURNERS

MATCH THROW



AVAILABLE IN ROUND AND SQUARE

BRASS AWS, TPSI & MT

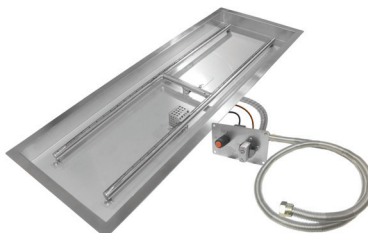


TPSI SPARK IGNITION



AVAILABLE IN ROUND AND SQUARE

H-BURNER

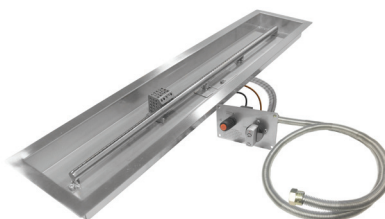


TFS W/ REMOTE



AVAILABLE IN ROUND AND SQUARE

T-BURNER



LAVA ROCK



Mined from the earth, these dark rocks contrast beautifully against a bright flame. Each rock is approximately 1" to 2" in diameter. 10lb bag / 50lb bag

LAVA STONE



Made from tumbled lava rock, these stones lend a casual elegance. Each stone is approximately 1" to 2" in diameter 40lb bag

SPIT FIRE



SEDONA



IRONWOOD STEEL

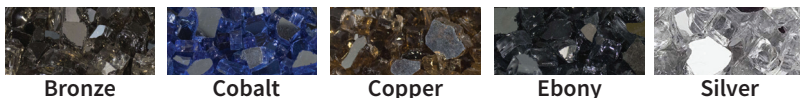


GLASS

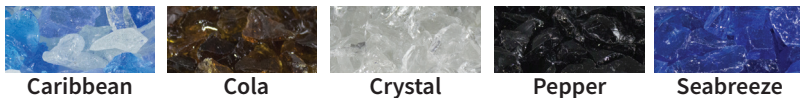
REFLECTIVE Mirror finish broken reflective. Approx. 1/2" to 3/4" in size 10lb jug

BROKEN Large broken. Approx. 1/2" to 3/4" in size 10lb jug

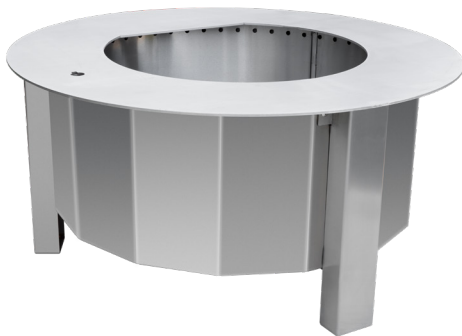
LARGE REFLECTIVE GLASS COLORS



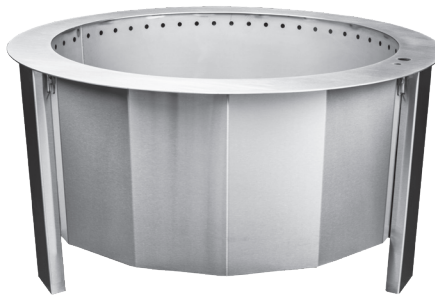
BROKEN GLASS COLORS



LUME SMOKE-LESS FIRE PIT



MULTISIDED WITH SEAR TOP



MULTISIDED NON-SEAR

- Unique Design for Less Smoke
- Larger Surface, More Cooking
- Lightweight, Easy to Transport
- Free Standing or Built-In
- Modular, Removable Legs
- Low Maintenance



Purchase the Grill Post and cover separately to maximize your Smoke-less cooking potential!

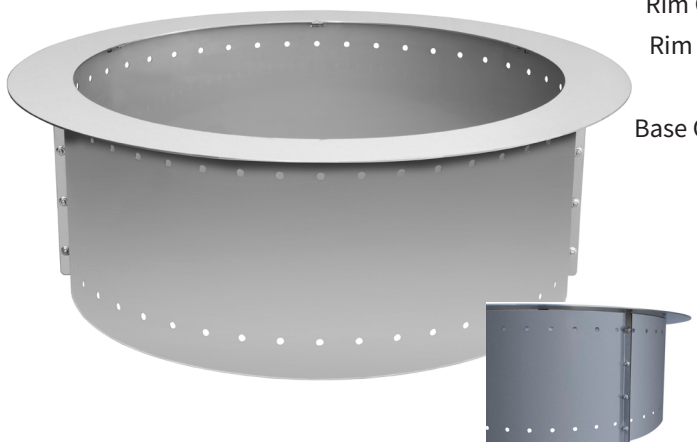
LUME-MSG



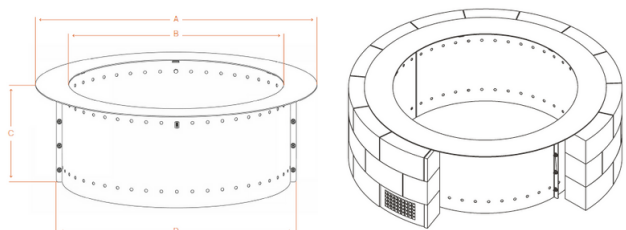
	NON-SEAR	NON-SEAR	SEAR	SEAR
	LUME-MS1	LUME-MS2	LUME-MS1SR	LUME-MS2SR
Dimensions				
Rim Outer Diameter	26"	31"	29"	34"
Rim Inner Diameter	20"	25"	18"	20"
Height	16 ³ / ₈ "	16 ³ / ₈ "	16 ⁷ / ₁₆ "	16 ⁷ / ₁₆ "
Base Outer Diameter	25 ¹ / ₄ "	30 ¹ / ₄ "	27 ³ / ₈ "	32 ³ / ₈ "
Dimension	23 ³ / ₁₆ "	28 ³ / ₁₆ "	24 ⁷ / ₈ "	29 ¹ / ₈ "
Dimension	N/A	N/A	16 ¹ / ₈ "	18 ¹ / ₈ "
Outer Liner	23 ⁵ / ₁₆ "	28 ⁵ / ₁₆ "	23 ⁵ / ₁₆ "	28 ⁵ / ₁₆ "
Weight	44.14 lbs.	55.46 lbs.	62.25 lbs.	82.18 lbs.
Fits Openings	23 ¹ / ₂ "-25 ¹ / ₄ "	28 ¹ / ₂ "-30 ¹ / ₄ "	23 ¹ / ₂ "-27 ¹ / ₂ "	28 ¹ / ₂ "-32 ¹ / ₂ "

NEXT EVOLUTION SMOKE-LESS

Made of 100% commercial-Grade Stainless steel smoke-less wood fire pit. The insert can be installed in a Segmented Retaining Wall (SRW) by simply fastening the two bases of the pit and heavy-duty single rim together, and then dropping the unit into the SRW.



Dimensions	NES-29R	NES-34R	NES-36R
Rim Outer Diameter (A)	34"	39"	41"
Rim Inner Diameter (B)	26"	31"	34"
Height (C)	12"	12"	12"
Base Outer Diameter (D)	29"	34"	36"
Weight	21 LBS	25 LBS	26 LBS
Fits Openings	29"-32"	34"-37"	36"-39"



SANCTUARY SERIES



SANCTUARY 1



FEATURES

- Ignition Systems: AWS or TPSI
- Dimensions: 56" W x 16" H x 38" D
- Outdoor GFRG Fire Table (430 lbs. - Table Only)
- Choose between Natural Gas (NG) and Propane (LP)
- Liquid Propane (LP) conversion kits sold separately
- Natural Gas: 65,000 Btu's
- Includes weather cover

SANCTUARY 2



FEATURES

- Ignition Systems: MT, TPSI or AWS
- Dimensions: 39" Diameter x 18" H
- Outdoor GFRG Fire Bowl (222 lbs. - Bowl Only)
- AWS & MT ship as Natural Gas (NG) or Propane (LP)
- TPSI ships as Natural Gas (NG)
- Liquid Propane (LP) conversion kits sold separately
- Natural Gas: 65,000 Btu's (MT units: 75,000 Btu's)
- Includes weather cover

SANCTUARY 3

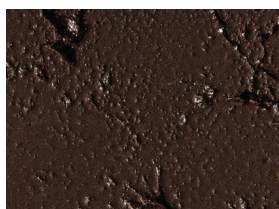


FEATURES

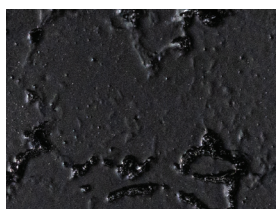
- Ignition Systems: MT, TPSI or AWS
- Dimensions: 30" Diameter x 14 1/4" H
- Outdoor GFRG Fire Bowl (112 lbs. - Bowl Only)
- AWS & MT ship as Natural Gas (NG) or Propane (LP)
- TPSI ships as Natural Gas (NG)
- Liquid Propane (LP) conversion kits sold separately
- Natural Gas: 65,000 Btu's (MT units: 75,000 Btu's)
- Includes weather cover



ARCTIC



CHOCOLATE

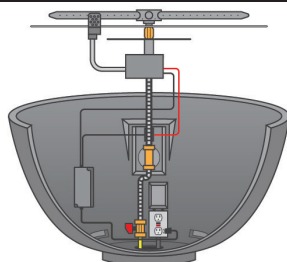


RAVEN

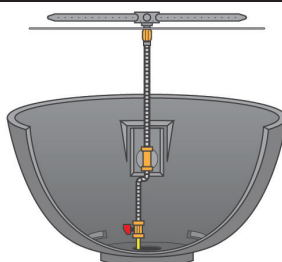


SLATE

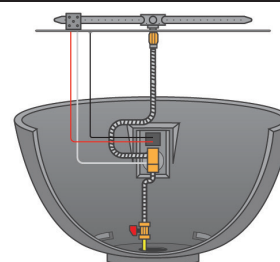
AWS IGNITION



MT IGNITION



TPSI IGNITION



ENCORE & OVATION FIRE PITS

ENCORE FIRE PIT



	BASE	TOP	HEIGHT	LBS/PALLET
WITHOUT TOP			18"	
WITH TOP	40" x 40"	44" x 44"	19½"	400

OVATION FIRE PIT



	BASE	TOP	HEIGHT	LBS/PALLET
WITHOUT TOP			18"	
WITH TOP	40" DIAMETER	44" DIAMETER	19½"	345

CHOOSE YOUR TEXTURE:



BARN WOOD*



LEDGE STONE



STACKED STONE

CHOOSE YOUR COLOR:



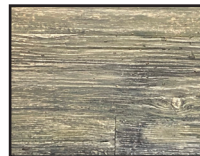
BISCOTTI TAN



MOUNTAIN SLATE



NY BLUESTONE



WEATHERED WOOD

CHOOSE YOUR TOP:



BLUESTONE



BROWN

*Barn Wood texture available in Rustic Brown (color shown in texture swatch) and Weathered Wood colors. Stone textures available in Biscotti Tan, Mountain Slate and NY Bluestone colors.

CHOOSE YOUR WOOD OR GAS PACKAGE:

WOOD	4 Panels (Encore) or 2 Panels (Ovation) and Connectors	Stone-Face Top	Round/Square Insert	Smoke-less Metal Insert	Smoke-less Stainless Steel Insert
Wood Standard 1					
SMOKE-LESS					
Smoke-Less 1					
Smoke-Less 2					

GAS	4 Panels (Encore) or 2 Panels (Ovation) and Connectors	Stone-Face Top	Lava Rocks ² (min qty)	Match Throw Burner Kit	TPSI Burner Spark Ignition Kit	TFS Burner Kit w/ Remote
*Deluxe Match Throw ¹						
*Deluxe Spark TPSI ¹						
Deluxe Remote TFS**						

Vent kit included with all ignition systems. Control panel included. **Brass options available.**

*Control panel included | ¹Includes NG to LP Piece

²Lava Rock supplied is minimum quantity needed. Must add additional or glass for finish

****Must be ordered with natural gas or liquid propane**

TRIUMPH FIRE PIT



LENGTH	WIDTH	HEIGHT	TOP HEIGHT	LBS/PALLET
62½"	40"	24"	1¼"	750

CHOOSE YOUR TEXTURE:



BRICKFACE



STACKED STONE

CHOOSE YOUR COLOR:



BISCOTTI TAN



HARBOR GRAY*



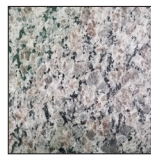
NY BLUESTONE*

*Harbor Gray not available in Stacked Stone.
NY Bluestone not available in Brickface.

INCLUDES:

- 4 GFRC Wall Panels
- 4 GFRC Corner Pieces
- 44" x 66" Granite Top
- 1 NPS 14" x 20" Access Door w/ Vents
- 1 Paver Vent 4LNTS
- 1 LOF-BO-LP40 (Conversion Kit)
- 1 FG-32LPHRK Propane Regulator & Hose
- 1 LOF-3612TPSI-N (12" x 36" linear burner)
- Lava Rocks

GRANITE TOP



Caledonia

SPARK SCREENS

781 BLACK



775 BLACK



775 STAINLESS STEEL



770 BLACK



MODEL

DIMENSIONS

781 Black

39" Diameter 18" High-Steel (Round)

775 Black

30" Diameter 15" High (Round)

775 Stainless Steel

30" Diameter 15" High Stainless Steel (Round)

770 Black

30" Diameter 12" High Steel (Square)

COWBOY CAULDRON



Say "Howdy!" to the Cowboy Cauldron—the world's finest fire pit and grill.™ And possibly the coolest thing you ever did see. Channel your inner wrangler and treat your family and friends to endless entertainment and moments of meaningful interaction with one of these beautiful, versatile, and durable cauldrons. Each Cowboy Cauldron is painstakingly built by hand from solid plate steel and functions as a combination of fire pit, grill, and cooking vessel. It's built to outlive you and last for generations to come. Whatever your lifestyle, there is a cauldron that fits it. You can take it to campgrounds, beaches, lakeshores, ski hills, tailgate parties, in the RV, and to other places where adventure awaits. Or settle it into your backyard and let the fun begin as your favorite people gather 'round it. Be forewarned... you're gonna need more chairs! Happy trails...



24 IN. DIAMETER / 35 LB. BASIN



30 IN. DIAMETER / 75 LB. BASIN

The Dude®

This smaller cauldron is huge on adventure. It is lightweight, convenient, mobile, and affordable with segmented legs for easier transport. Its 24", 35 lb. basin brings the heat and draws the crowds wherever it goes – camping, tailgate parties, ski hills, the beach, or on your patio. Scaled to fit almost any lifestyle. You'll wonder how you ever lived without it.

The Urban Cowboy

The most versatile cauldron. Its 30" basin provides your crew with plenty of warmth to extend your outdoor life by weeks in the fall and spring. More than a cozy heat source, this cauldron really shines as a grill and cook pot--adding a western flair, a haunting vibe, or a touch of sophistication to any gathering at home or on the road. Though slightly larger, one person can still easily transport it, so you don't have to leave home without it.

ALSO AVAILABLE:

The Wrangler



36 IN. DIAMETER / 130 LB. BASIN

The Ranch Boss



42 IN. DIAMETER / 220 LB. BASIN

FEATURES:

Solid Steel Construction
Segmented, 2-Piece Legs
Use as Fire Pit, Grill, or Cooking Vessel

INCLUDED:

Cauldron Basin
Tripod Frame
Suspension Chain
Charcoal Grate
Cooking Grill
Rain Cover

FEATURES:

Solid Steel Construction
Perfectly Proportioned
Multipurpose Fire Pit, Grill, Cooking Vessel

INCLUDED:

Cauldron Basin
Tripod Frame
Suspension Chain
Charcoal Grate
Cooking Grill
Rain Cover

KALEA BAY FIREPLACE



	LENGTH	WIDTH	HEIGHT	LBS/PALLET
WITHOUT TOP	87"	19½"	42"	750
WITH TOP	91½"	24½"	43½"	

CHOOSE YOUR COLOR:



BISCOTTI TAN

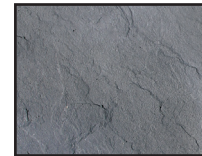


MOUNTAIN SLATE



NY BLUESTONE

CHOOSE YOUR TOP:



BLUESTONE



BROWN

*Only offered in Ledge Stone texture

SINGLE SIDED KALEA BAY INCLUDES:

- 1- 42" high x 84" wide with cut out
- 1- 42" high x 84" wide panel (no cut out)
- 2- 42" high x 17" wide side panel
- 4- 42" high structural corner units, smooth
- 1- Cast Stone top (24½" x 91½")
- 1- 48" Kalea Bay Fireplace insert with black crushed glass

Non LED

*Please order gas specific LP/NG

DOUBLED SIDED KALEA BAY INCLUDES:

- 2- 42" high x 84" wide with cut-out
- 2- 42" high x 17" wide side panel
- 4- 42" high structural corner units, smooth
- 1- counter top (24½" x 91½")
- 1- 48" Kalea Bay Fireplace insert with black crushed glass

Non LED

*Must order see through conversion

NANTUCKET KITCHEN ISLAND



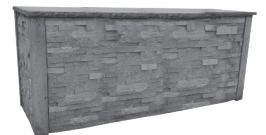
PACKAGE A (PICTURED) INCLUDES:

- 1 Back panel
- 1 Front panel
- 4 Corners
- 2 End panels (sides)
- Top
- Drop cloth/sheet protector
- 32" Sizzler Pro Grill • cutout dimensions: 30¾" (W) x 8½" (H) x 20¾" (D)
- 30" Double Access Door • cutout dimensions: 30¼" (W) x 19¼" (H)
- 1 Strap
- 1 Bag of PMG-2
- 2 Tubes of adhesive

*Please order gas specific LP/NG

PACKAGE B INCLUDES:

- 2 Horizontal panels
- 4 Corners
- 2 End panels (sides)
- Top
- Drop cloth/sheet protector
- 1 Strap
- 1 Bag of PMG-2
- 2 Tubes of adhesive



CHOOSE YOUR TEXTURE:



BARN WOOD*



LEDGE STONE



STACKED STONE

WITHOUT TOP	35" x 84" x 41"
WITH TOP	36½" x 86" Horizontal
LBS/PALLET	1,000

CHOOSE YOUR TOP:



BLUESTONE



BROWN

CHOOSE YOUR COLOR:



BISCOTTI TAN



MOUNTAIN SLATE



NY BLUESTONE



WEATHERED WOOD

*Barn Wood texture available in Rustic Brown (color shown in texture swatch) and Weathered Wood colors. Stone textures available in Biscotti Tan, Mountain Slate and NY Bluestone colors.

WOOD FIRED PIZZA OVENS



IMPERIAL

304 stainless steel
Black top
Refractory brick floor
Removable door with wood handles
Outside oven: 33½" x 38¼"
Inside oven: 29½" x 32½"
Thermostat
Opening: 17⅝"
Fits a 16" pizza



All-Weather
Cover

INCLUDED ACCESSORIES:



Pizza
Peel

Cleaning
Brush



DUKE

304 stainless steel
Black top
Refractory brick floor
Removable door with wood handles
Outside oven: 21" x 30¾"
Inside oven: 18" x 27¼"
Opening: 15"
Fits a 12" personal pizza

PERGOLAS



- Constructed of vinyl
- Easy maintenance
- Customizable
- Lifetime warranty
- Two stock sizes: 13'x16' or 15'x15'

CUSTOM SIZES AVAILABLE

DIMPLEX OUTDOOR HEATERS



Dimplex DLW Series Outdoor/Indoor Radiant Heater, White
DLW3200W24



- Effective radiant heat that warms like the sun, heating people and objects with zero glare
- Silent, maintenance free operation
- IP 55 rated, weather-proof construction allows year-round enjoyment
- Designed for permanent hardwired installations on a dedicated 240V circuit

Dimplex DLW Series Outdoor/Indoor Radiant Heater, Black
DLW2400B24



- Effective radiant heat that warms like the sun, heating people and objects with zero glare
- Silent, maintenance free operation
- IP 55 rated, weather-proof construction allows year-round enjoyment
- Designed for permanent hardwired installations on a dedicated 240V circuit

Dimplex Outdoor Portable Infrared Propane Heater, 31,500 BTU
DGR32PLP



- Powerful, stylish and portable heat for outdoor areas
- Heat on demand - when and where you need it
- Durable stainless steel construction
- Advanced safety features including world class wind protection up to 9.9 Mph/16 km/hr.

*Must order both DGR32PLP-HEAD & DGR32PLP-STAND

Dimplex Outdoor Wall-mounted Natural Gas Infrared Heater, 31,500 BTU
DGR32WNG



- Powerful, stylish and space-saving heat for outdoor areas
- Heat on demand - when and where you need it
- Durable stainless steel construction
- Advanced safety features including world class wind protection up to 9.9 Mph/16 Kph

Dimplex Indoor/Outdoor Electric Infrared Heater, 240V 2000W
DSH20W



- IP65 rating for indoor and outdoor applications
- 1, 2 and 3 hour delay timer
- 8 hour auto shutoff safety mechanism
- 3 second maximum heat up time

Dimplex DIRP Outdoor/Indoor Infrared Heater, Plug-in Model, 120V, 1500W
DIRP15A10GR



- Nextrema® Schott glass ensures even heat distribution and minimizes light emissions
- Corrosion resistant anodized aluminum and 304 stainless steel makes this product suitable for all climates
- Three temperature settings - 600W (low), 1050W (med), 1500W (high) for maximum comfort
- Produces full heat in as little as 6 second maximum

Dimplex Outdoor/Indoor Electric Infrared Heater
DIR15A10GR



- Nextrema® Schott glass ensures even heat distribution and minimizes light emissions non-porous surface and attractive design
- Instant Heat: Ruby halogen bulb provides full power in under 8 seconds
- Waterproof: IP65 rated for outdoor or indoor use
- Corrosion Resistant: Anodized aluminum casing provides long life and suitable for all climates

Dimplex Indoor/Outdoor Electric Infrared Heater, Permanent Location Floor Stand
DSHSTAND



- Ability to tilt heater(s) for optimal heat exposure
- Corrosion resistant anodized aluminum and 304 stainless steel makes this product suitable for all climates
- All hardware included
- Quick and easy installation



ESSENZE DI LUCE



Take your outdoor living space to the next level with stunning, multi-sized natural stone monoliths and LED lighting available with or without a high-fidelity sound diffusion system. From romantic moments to big bashes, Essenze di Luce has you covered with a variety of natural stone lighting and rock speaker options that are maintenance-free and designed to withstand the most adverse weather conditions-- from ice to the desert sun. Perfect for gardens, poolscapes, and outdoor living use.

Menhir Di Luce



A series of natural stone outdoor lamps and garden lights with LED technology, available in four different styles—Soft, Sidelong, Cross, and Stonehenge. In daylight, they function as design elements but evoke emotional light in the evening.

FEATURES

- Choose from single, double, or triple illuminated sections
- Choose from horizontal or inclined patterns
- Available in 2 standard textures
- Minimalistic and natural design complements any architectural style
- Ice resistant
- Stainless Steel

Menhir Sound



This natural stone outdoor sound system integrating Hi-fi sound diffusion and LED lighting brings both sights and sounds to the yard. Fill your space with soft illumination and your favorite music—all effortlessly emanating from natural stone elements. Unparalleled resistance to splashes, spray, sand, and the most adverse weather conditions.

FEATURES

- Aisi 316L stainless steel audio system
- Easy connect; user-friendly; control music from your device
- Plays/streams the most popular music services
- Choose from 3 standard textures
- Ice resistant
- Wi-fi Audio Controller

Stake



Arrange an ambience with outdoor path lighting. Sleek pillars of natural stone offer architectural and design elements by day and transform into striking and luminous scenic features by evening. Perfect for illuminating footpaths, flower beds and outdoor living areas.

FEATURES

- Natural stone floor lamp for outdoors
- Choose single or double vertical LED (only 4mm thick)
- Ice resistant
- Multiple color and texture options
- Fits modern, contemporary, and Mediterranean styles
- Chemical Resistant
- Stainless Steel



**VISIT OUR NEW
OUTDOOR LIVING
SHOWROOM
& TRAINING CENTER**

**9 Aaron Way
Sparta, NJ 07871**

New York

Corporate Headquarters

612 Muncy Avenue • Lindenhurst, NY 11757
P: 631.669.0700 • F: 631.669.0711

Albany

801 Watervliet Shaker Road • Latham, NY 12110
P: 518.888.2731 • F: 518.252.4937

New Jersey

482 Houses Corner Rd • Sparta, NJ 07871
P: 551.232.6443 • F: 973.425.5188

New Jersey Design Center

620 Cedar Swamp Road • Jackson, NJ 08527
P: 201.932.4500 • F: 732.960.9950

NPS Outdoor Living Showroom

9 Aaron Way • Sparta, NJ 07871
P: 908.482.8483

New England

99 Stoddard Avenue • North Haven, CT 06473
P: 203.234.2800 • F: 203.985.0381

Massachusetts

241 Francis Avenue • Mansfield, MA 02048
P: 508.298.2243 • F: 508.590.7678

Maryland

8400 Progress Court • Frederick, MD 21701
P: 301.620.0100 • F: 301.620.0007

Delaware

1000 South Market Street • Wilmington, DE 19801
P: 302.981.0986 • F: 302.691.4500

Virginia

9135 Barricade Lane • Mechanicsville, VA 23116
P: 571.332.3513 • F: 571.406.1251